



Table of Contents:

1. About US.	
a. Co-founders.	(Page 4)
b. CEO Brief.	(Page 5)
c. Companies represented by us in Egypt.	(Page 6)
d. Some of our Clients.	(Page 7)
2. Design, Produce, Manufacture & Install of:	
a. Insulated Sandwich Panels.	(Page 11)
b. Insulated Floors.	(Page 31)
c. Corrugated Steel Sheets.	(Page 33)
d. Caravans Units.	(Page 34)
e. All types of insulated Cold Stores Doors.	
i. Sliding Doors.	(Page 38)
ii. Hinged Doors.	(Page 53)
iii. Panic Doors.	(Page 62)
iv. Swing Doors.	(Page 63)
v. Rapid Doors.	(Page 69)
vi. Folding Doors.	(Page 72)
vii. Shutter Doors.	(Page 73)
viii. Ind. Overhead Sectional Doors	(Page 74)
ix. Automation Systems option for all mentioned Door Types above.	(Page 81)
3. Docking Units: (Dock Leveler, Dock Shelter & Manual or Automatic Ind. Overhead Sectional Doors)	(Page 82)
a. Dock Levelers:	(Page 84)
i. Standard Hydraulic Dock Levelers.	(Page 85)
ii. Smart Hydraulic Dock Levelers.	(Page 85)
iii. Vertical Hydraulic Dock Levelers.	(Page 86)
iv. Mechanical Dock Levelers.	(Page 86)
v. Telescopic Dock Levelers.	(Page 87)
vi. Scissors Dock Levelers.	(Page 88)
vii. Mini Dock Levelers.	(Page 88)
viii. Iso-Thermal Tunnels.	(Page 89)
ix. Yard Ramps.	(Page 90)
x. Docking Bumpers.	(Page 91)

- b. Dock Shelters:**
 - i. Standard Dock Shelters. (Page 92)**
 - ii. Inflatable Dock shelters. (Page 93)**

- 4. Industrial Curtains:**
 - i. Air Curtains. (Page 94)**
 - ii. P.V.C Curtains. (Page 96)**

- 5. Industrial Refrigeration Sector: (Page 98)**
 - a. Ammonia (R717) Refrigeration. (Page 99)**
 - b. Compressor Racks. (Page 119)**
 - c. Package units. (Page 124)**
 - d. Pre-coolers systems. (Page 126)**
 - e. IQF & Freezing Tunnels. (Page 128)**
 - f. Maintenance & After Sale services. (Page 129)**

- 6. Mobile Container Water Chillers for Industrial Applications:**
 - a. Design, 3D drawing & commissioning. (Page 135)**
 - b. Existing Projects. (Page 136)**
 - (Page 141)**

- 7. Electrical (Escalators & Elevators). (Page 145)**

Frigo Arabia had been established in 1997, by **Engr. Abd El-Hakam Hashish** as a **1st Co-founder** from (1997 - till 2014) & then **Engr. Haitham Hashish** as a **2nd Co-founder** from (2007 - till now), Supported by more than 25 years of experience in the commercial & industrial refrigeration field.

Our Scope of Work is turn-key job for six major sectors as follow:

1. Manufactures of (class A) and Installation Contractors for:

- a. Insulated Sandwich Panels.
- b. Insulated Floors.
- c. Corrugated Steel Sheets.
- d. Precooling Rooms & Cold stores.
- e. Freezing Tunnels & Freezing Stores.
- f. Packing houses.
- g. Industrial Curtains.
- h. Caravans.

2. Manufactures of (class A) and Installation Contractors for all Insulated Types of Doors.

3. Manufactures of (class A) and Installation Contractors for all Docking units & Logistics equipment.

4. Industrial Refrigeration Contractors & Designer.

**5. Certified Industrial Water Chiller Designer & Assembler.
(Capacities range from 6 m³/hr. to 25 m³/hr.)**

6. Supplying Escalators & Elevators kit & spare parts.

N.B. All materials & components origin for all previous sectors imported from West Europe especially (Spain, Italy, France, Germany & etc.)

Frigo Arabia's C.E.O.

Engr. Haitham Hashish is Frigo Arabia's Co-Founder.

He is a mechanical engineer with Working experience more than 20 years in the industrial applications field, he also trained & worked in many huge multinational companies, till he became Quality Assurance Manager in Schlumberger Company.

So, when he started to lead Frigo Arabia, he had a new vision for developing the company to follow the lead of the biggest companies, he started to apply the quality assurance concepts, also he improved the manufacture methods by using the latest available machineries & techniques & he had given great care to develop the company's stuff.

He also made a lot of partnership & co-operation with some of biggest companies in the world & he had started to import the raw materials from the best certified origins in west Europe.

His message is always how to bumper & satisfy our customers through paying attention to quality & after-sales services.



Frigo Arabia is a Soul Agent in Egypt for:

1. Alapont France: Specialist in Escalators & Elevators.



2. She Company Spain: Specialist in Elevators manufacturer.



3. Alapont Spain: Specialist in Docking units and logistics.



4. Kavi Doors Spain: Specialist in all types of Industrial Doors & Air Curtains.



5. Karsu Company (Turkey): Specialist in Industrial Refrigeration

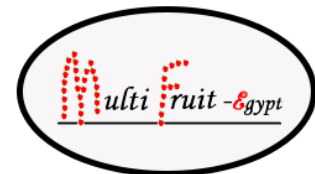


Also, Frigo Arabia is certified exclusive representative in Egypt for Maintenance & after sale services from Mayekawa MYCOM Company, Middle East.

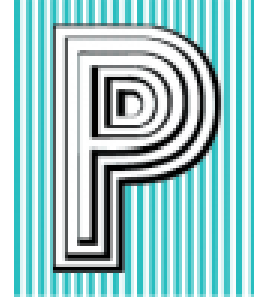


Manufacture of Industrial Refrigeration Compressors.

Some Of Our Clients:



Some Of Our Clients:



Some Of Our Clients:



Some Of Our Clients:



Frigo Arabia's Insulated Sandwich panels.**Sandwich Panels DESIGN: -**

- Sandwich Panels are produced individually according to the clients' required dimensions and design.
- A tongue and groove system are used to achieve perfect foam to foam contact by using a special locking device system or cam locks for airtight joints.
- Air relieve valve provided to balance internal and external pressures of cold & freezing rooms.

LOCKING SYSTEM: -

- By means of cam lock which comprise the most advanced and durable panel fastening system are spaced every 120 cm on each side of the panel.

INSULATION: -

- Rigid injected **polyurethane imported from West Europe or USA**, foam with Thermal Conductivity is ($k=0.021W/MK$) and it injected under high pressure between two layers of Steel Sheet.

- **Steel Sheets & Foam are imported from West Europe**

(France Origin)

THICKNESS: - 40 mm – 200 mm.

DENSITY: - 40 kg /m³ (higher densities also available).

WIDTH: - 1000, 1100, 1160 mms.

MOUNTING ACCESSORIES: -

- flashing.
- rivets.
- sealant.

Walls & Ceilings Sandwich Panel:

Prefabricated Polyurethane Sandwich Panels its Density is (40 KG/M³), Thermal Conductivity is (k=0.021 W/M.K.), Fire Rating B2 (DIN 4102) and envelope from both sides by white lacquered galvanized steel sheets (275 Grams/M²).



Technical Specifications: -

1-Foam: Imported from West Europe or USA.

Thickness	Density	Fire Rating	Heat Transfer Coefficient
40 mm	40 Kg / m ³	B2 (DIN 4102)	0.525 W / m ² . K
50 mm	40 Kg / m ³	B2 (DIN 4102)	0.420 W / m ² . K
80 mm	40 Kg / m ³	B2 (DIN 4102)	0.260 W / m ² . K
100 mm	40 Kg / m ³	B2 (DIN 4102)	0.210 W / m ² . K
120 mm	40 Kg / m ³	B2 (DIN 4102)	0.175 W / m ² . K
150 mm	40 Kg / m ³	B2 (DIN 4102)	0.140 W / m ² . K
200 mm	40 Kg / m ³	B2 (DIN 4102)	0.105 W / m ² . K

2-Steel Sheets: Imported from France.

Galvanized	Painting		Color		Thickness
	Bottom	Top	Internal Layer	External Layer	
G90=Z275 275 GRMS/ square meter	7 Microns PU Compatible Backer	5 Microns Primers + 20 Microns POLYSTER	RAL 9002	RAL 9016	0.50 m/m

3-Protective Film: P. E- 50 MY – PRINTED

4-Assemply Method: Sandwich Panels is tight together by Male & Female Connection & also Cam Lock Connection then inject the outside corners with Polyurethane.

5- CAM LOCK: - (Imported from Europe)

To be added as an option.

6- Panel Length: -

Up to 12 m.

7- Foam Injection: -

By means of 2 modern high pressure injection machine

(each 100 kg/min)

8- Press: - (Imported from Italy)

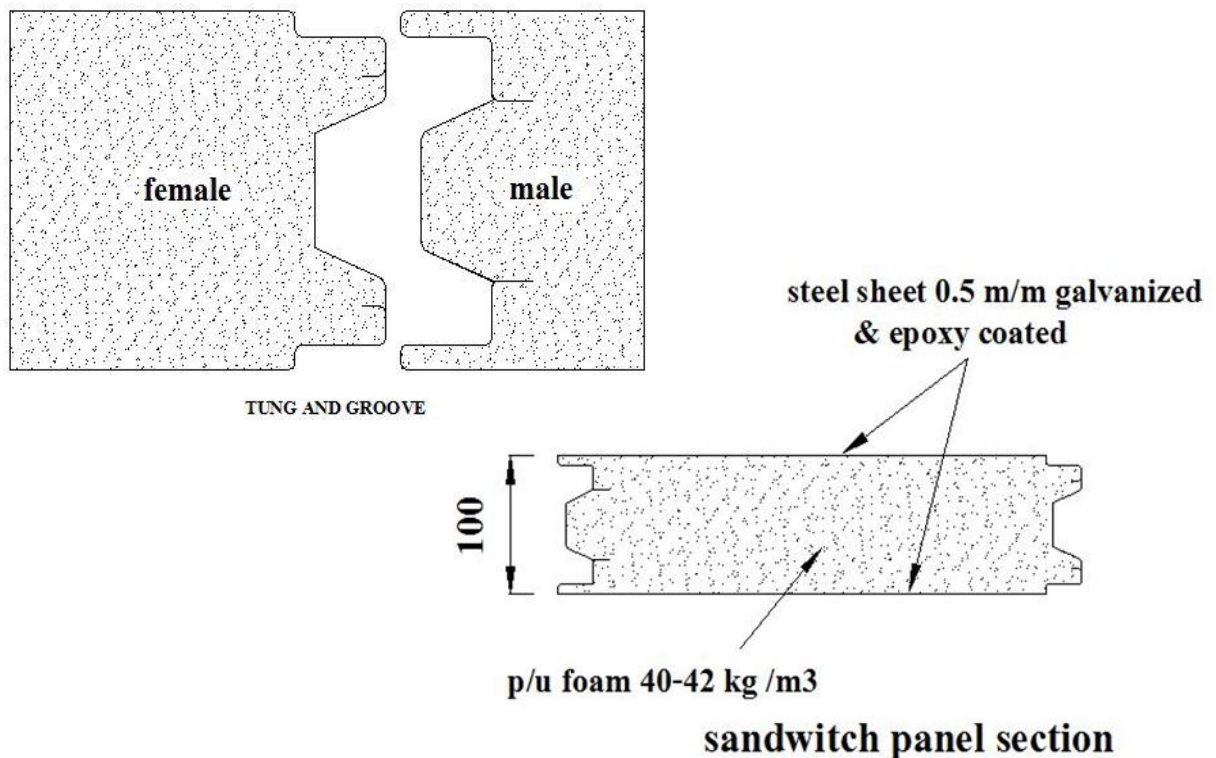
(Manni) modern discontinuous press (2+2) 12.30 m length.

9- Handling: - (Imported from Italy)

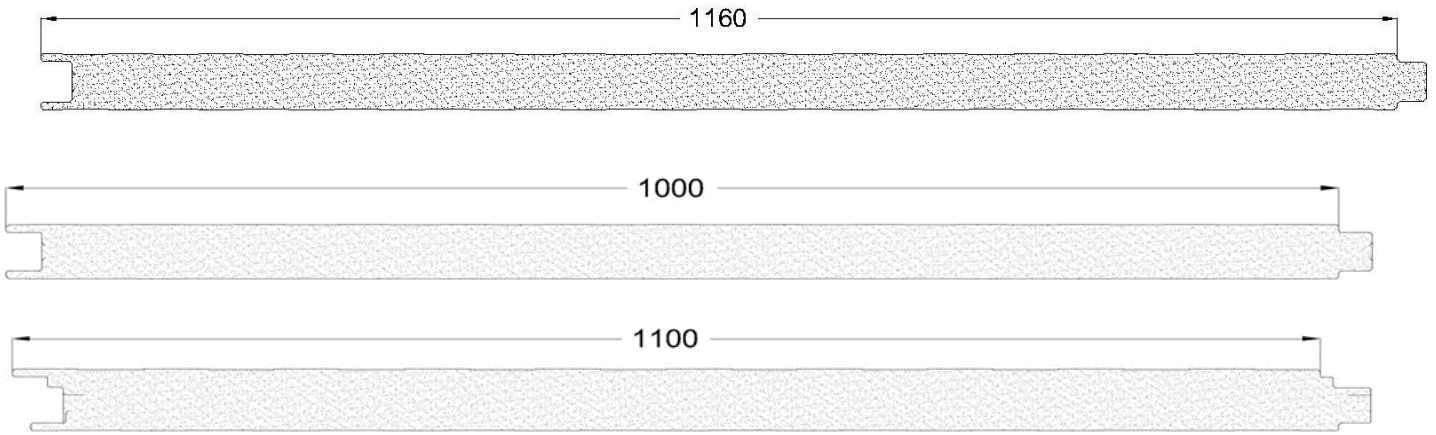
By vacuum cranes.

10- Packing: -

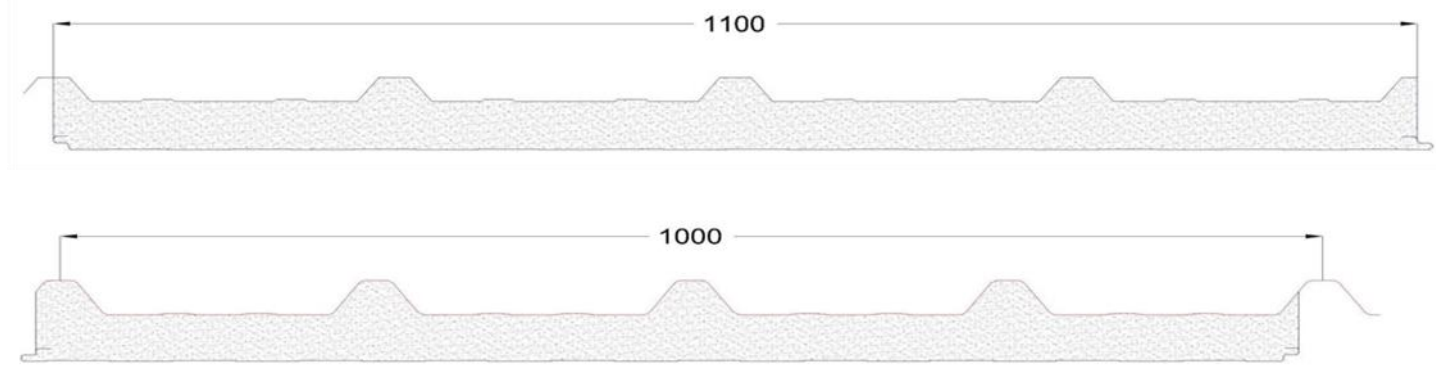
Strapped bundles each 5 panels ready for dispatch.



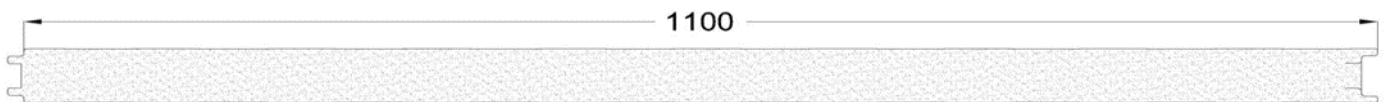
WALL & Ceiling PANELS

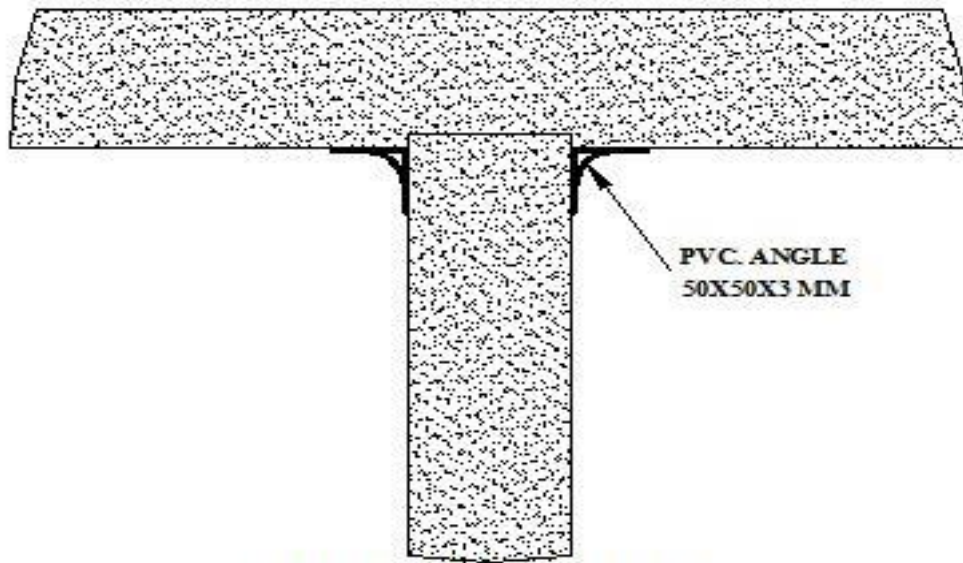


Roofing PANELS

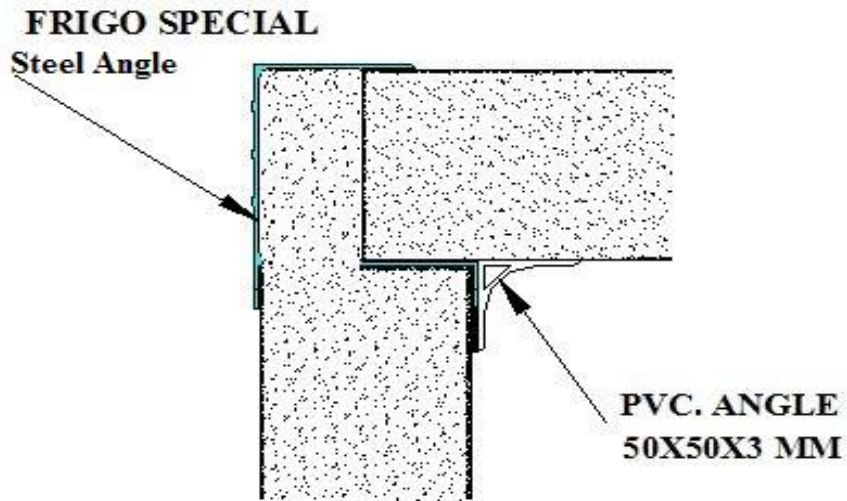


Hidden Screw PANELS

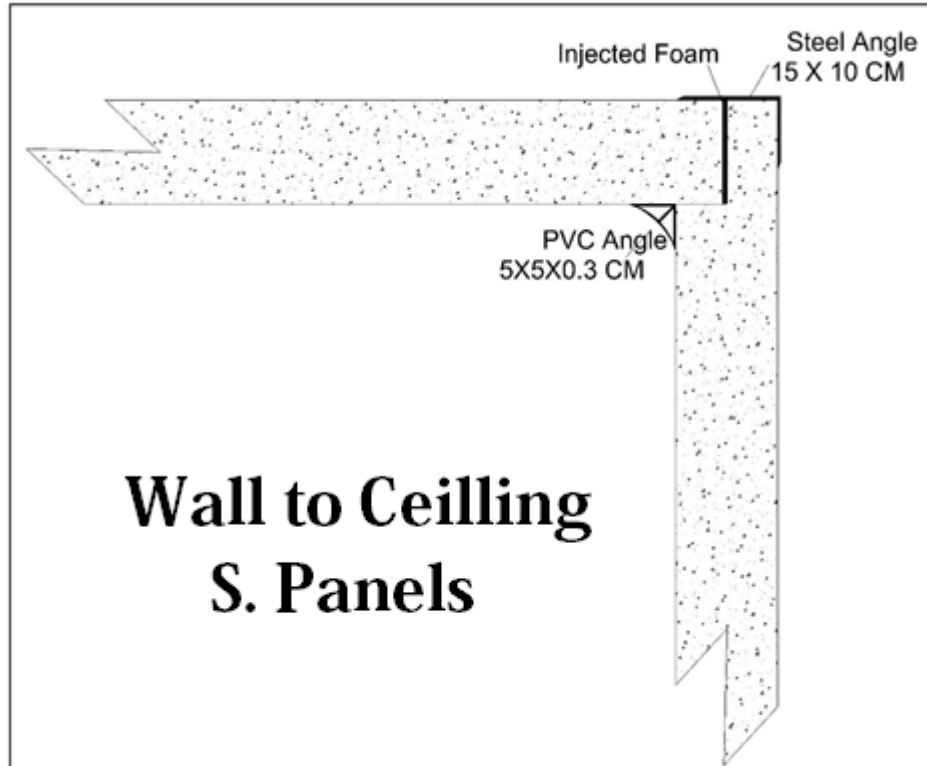
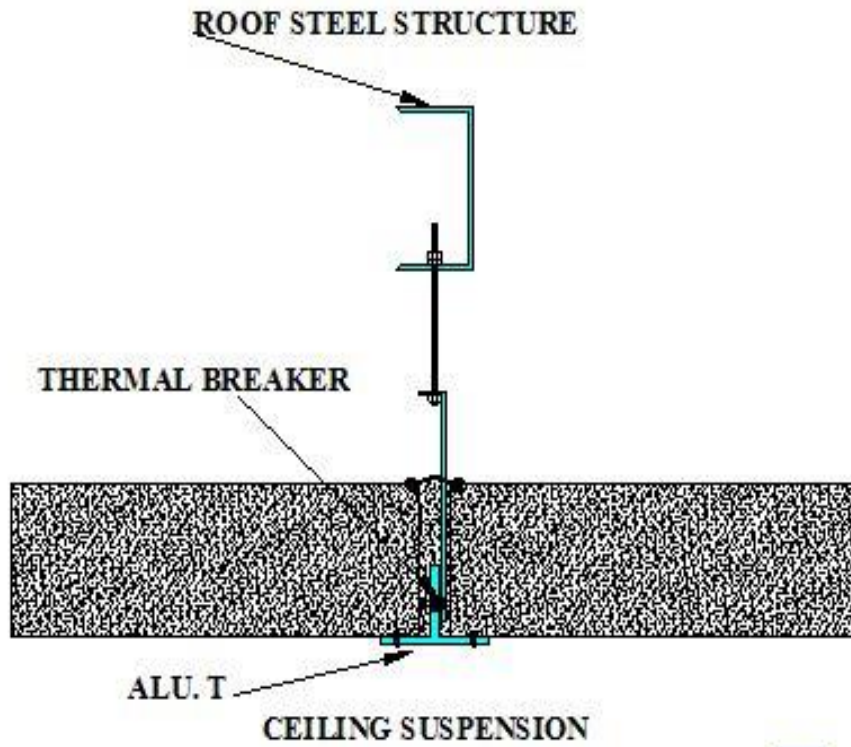


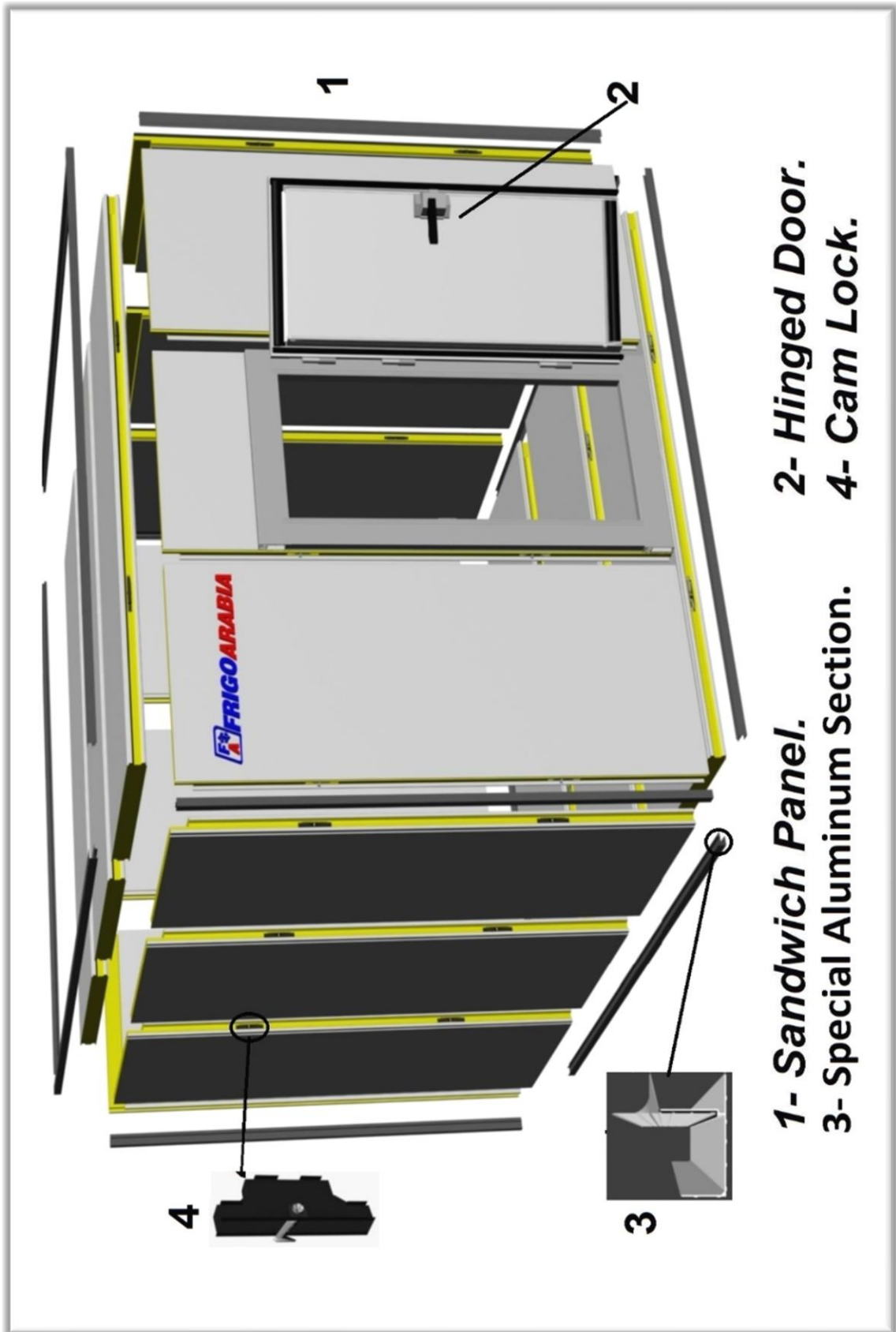


WALL TO PARTITION PANEL

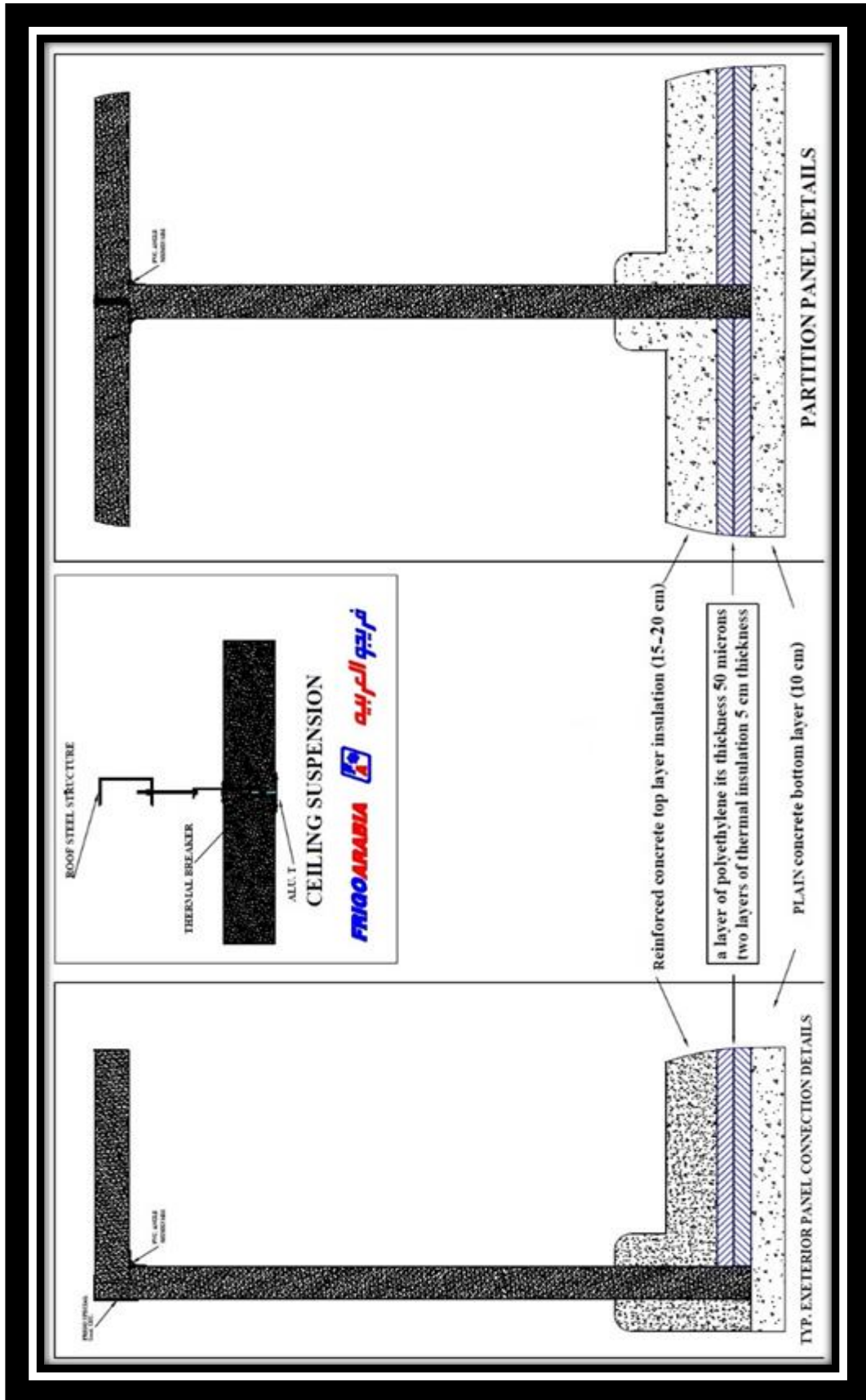


CORNER DETAILS





- 1- Sandwich Panel.**
- 2- Hinged Door.**
- 3- Special Aluminum Section.**
- 4- Cam Lock.**



Sandwich Panels **Presses**





High Pressure Injections Machine



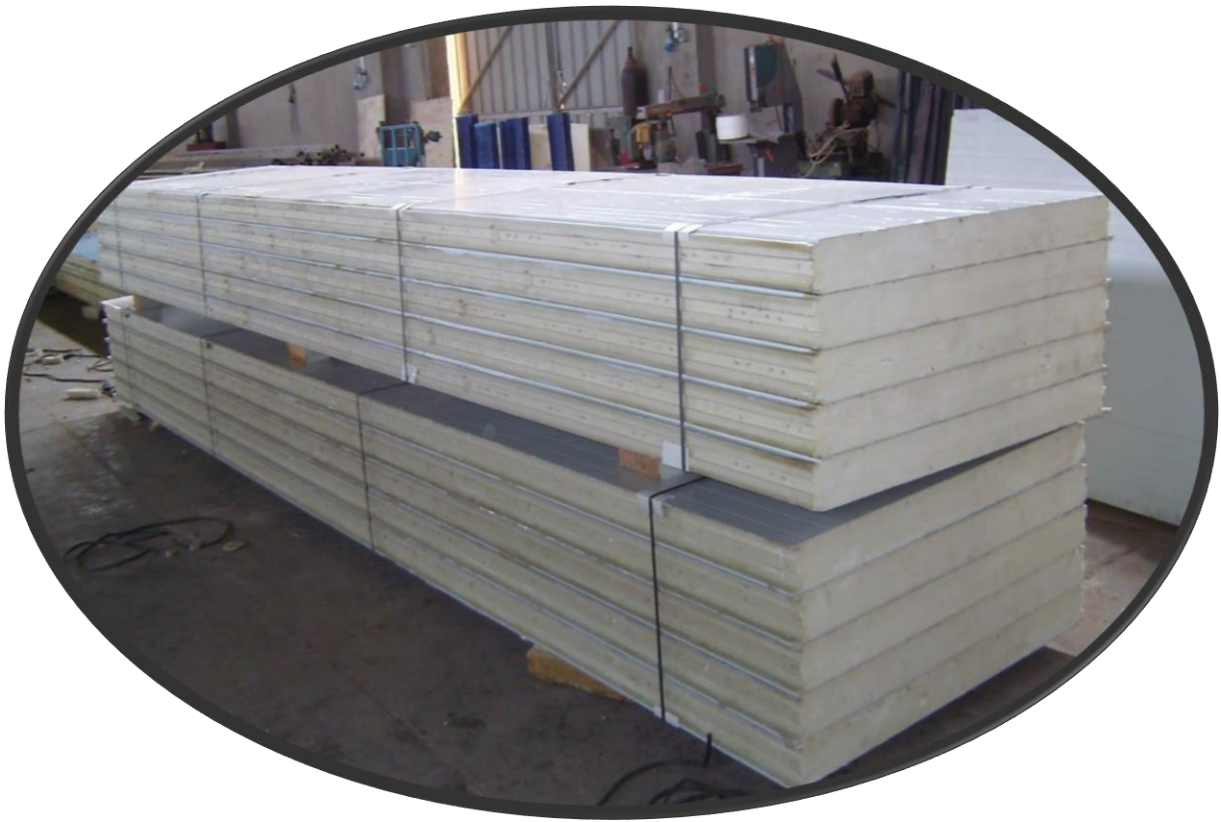
Vacuum Cranes



Some Of Our Raw Materials



Finish Product



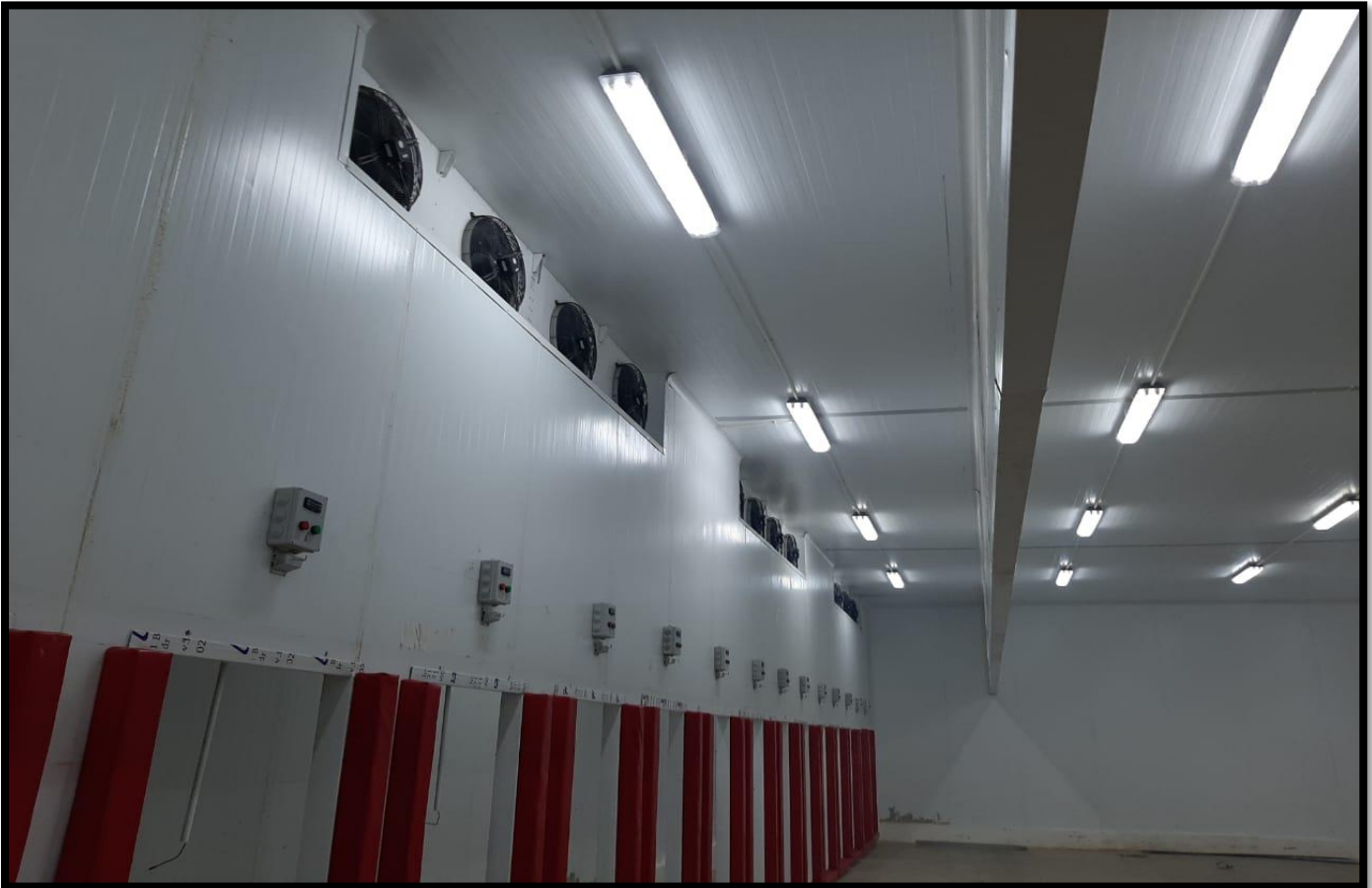
Some Of Our Projects











Coulms Cladding

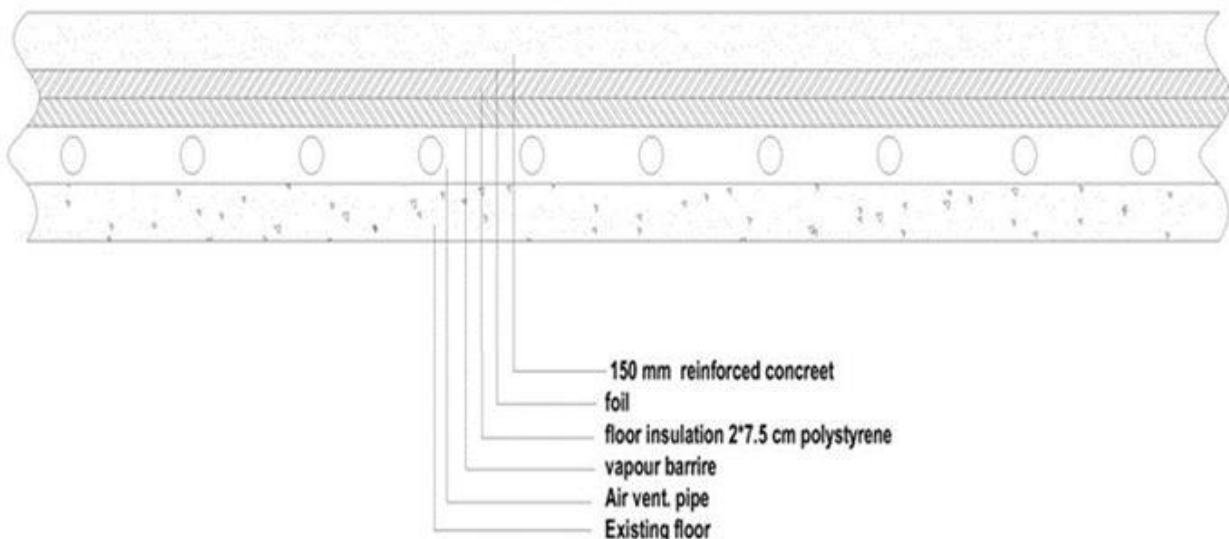
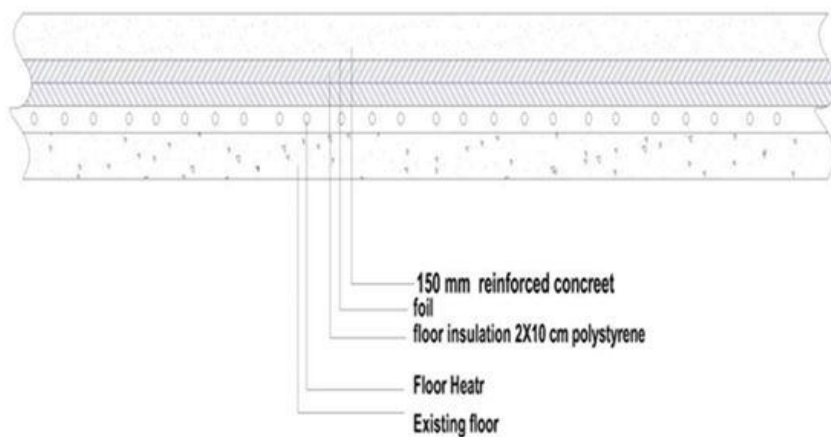


Round Cladding



Insulated Floors.

Two layers of thermal insulation, its thickness is 5 cm for cooling or 7.5 cm for freezing made from polyurethane insulation density of 40 kg / m³ and a layer of polyethylene its thickness 50 microns and the business does not include reinforced concrete top layer insulation (15 cm) as well as the bottom of the insulating concrete layer (10 cm).





Corrugated Steel Sheets Machine



Caravans Unit.

Frigo Arabia is specialist in manufacture & suppling Caravans science 1997, we have our design team that could design internal rooms as per our client application & we could make multiple levels caravans, and we use our high-quality materials to manufacture a primum caravans in our factories.

Also, we could make fixed or mobile portable caravans including the plumping & electrical systems, while considering the modern designs worldwide, to satisfy our customer needs.



Some of our interior designs



Fixed Caravans



Mobile Caravans

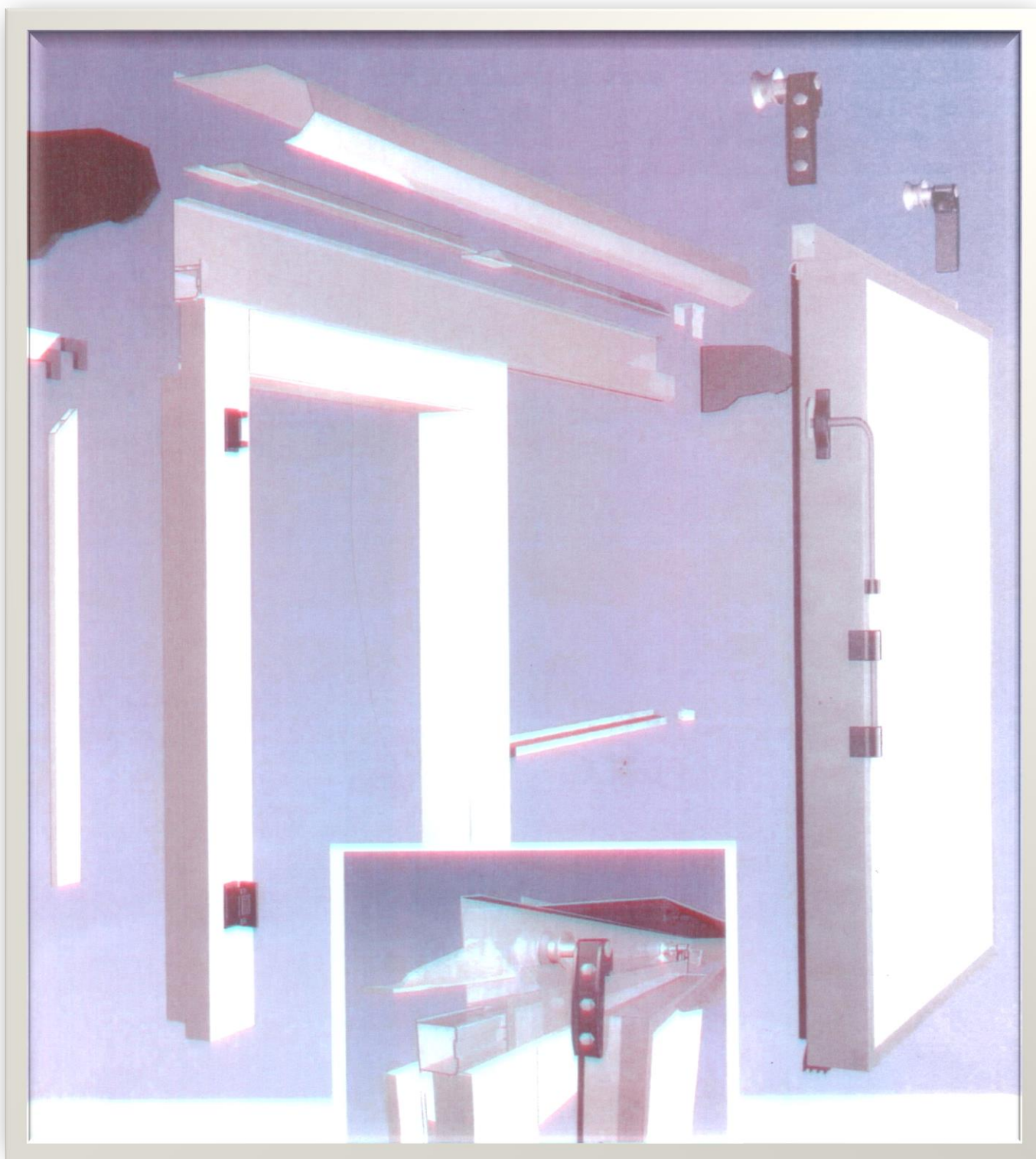


Sliding Door.

Insulated sliding door hard duty service usable for cold rooms, as well as freezing rooms with two frames of rubber injected by polyurethane insulation it's thickness of 12 cm and a density of 40 kg / m³ and envelope of both sides with white sheet steel it's thickness of 0.5 mm and accessories imported from West Europe and comprehensive lock and arm opening for the emergency.



Sliding Door Accessories imported from Italy.









Sliding Door Includes *Hinged Door.*



Double leaves Sliding Door.



Sliding Fire Door. (KAVIDOORS, Spain)

SLIDING FIRE DOOR



Kaviddoors sliding fire doors have a **fire resistance of 60 minutes**. They usually remain open, held **by an electromagnet**, until, in the event of fire detection or a power failure, the counterweight system causes the **doors to close automatically**. These will **seal the room completely**.
Designed for the food, distribution and transport sectors.

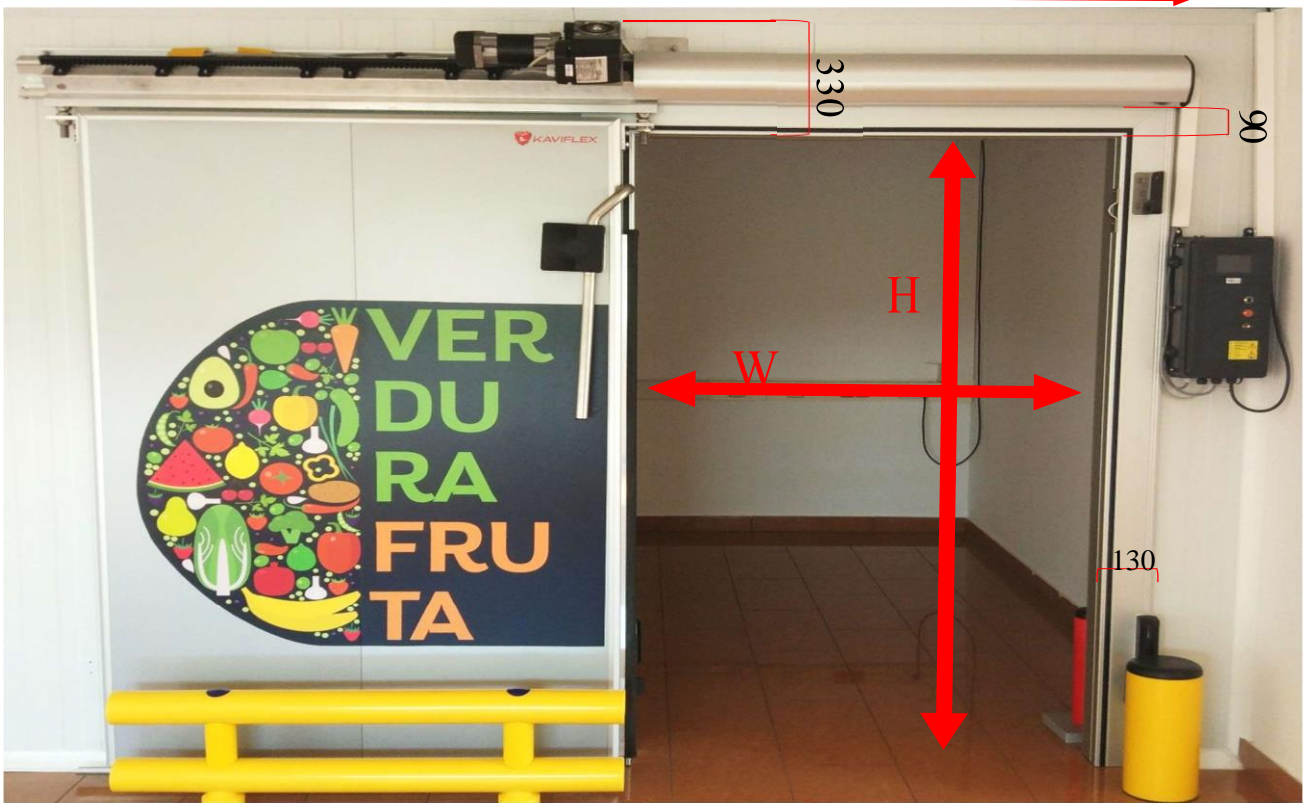


Automation Systems for Sliding Door.

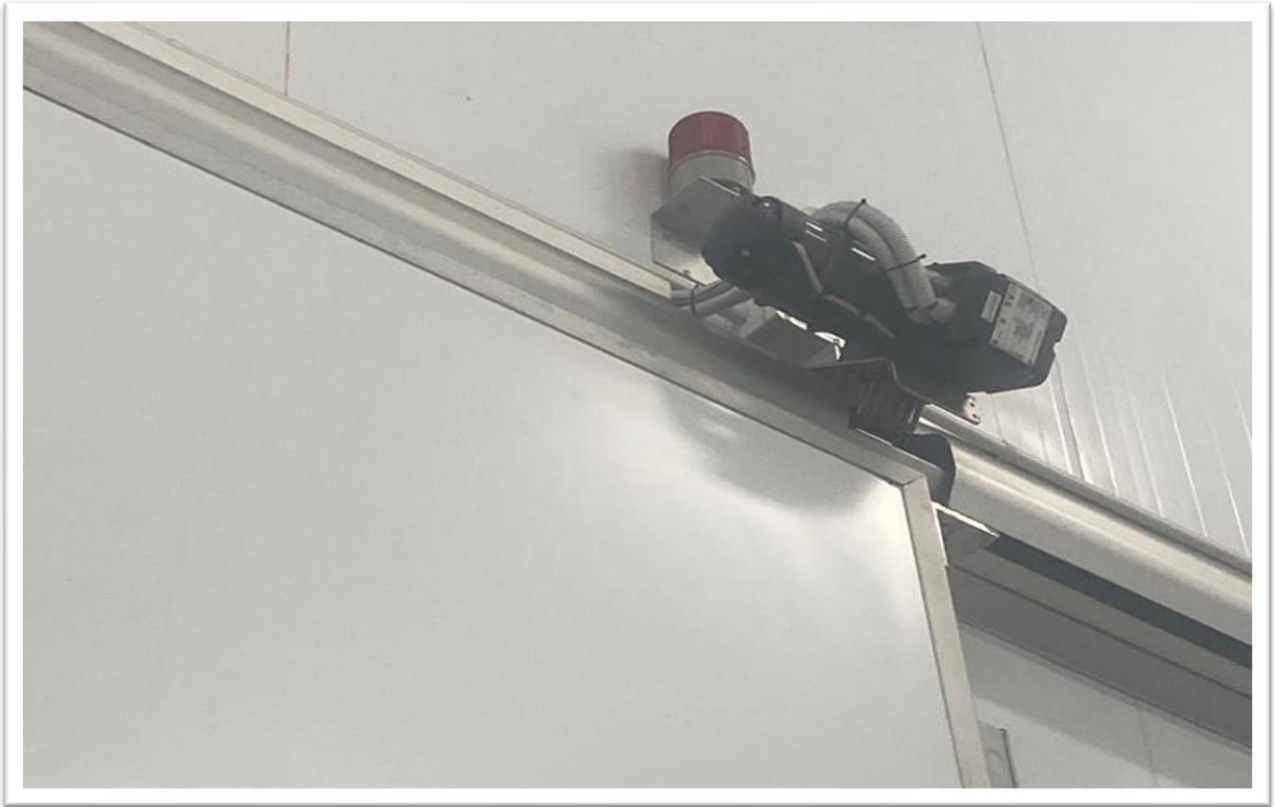
It is designed with a nylon rack system reinforced in the upper guide. the motor is fixed to the wall panel and connected to the rack and pinion mechanism, good transmission of uniform movement, silent and without vibrations, the system has a speed variator & anti fall system to provide secure operation & less failure.



$2 \times W + 410 \text{ mm}$









(KAVIDOORS, Spain)

CONTROLLED ATMOSPHERE SLIDING DOOR



Kaviddoors controlled atmosphere sliding doors are specially designed for **chiller rooms, fruit and vegetable ripening, controlled atmosphere applications and storage at very low levels of oxygen [Ultra Low Oxygen]**. CE marking and UNE-EN 13241-1 certification.



Easy assembly

Quick and easy installation with little maintenance. Pre-assembled door.



Great resistance and durability

Corrosion resistance, even in extreme environments depending on the finish.



Guide in installation

Convenient access to the guide during installation, adjustment or repair.



Adjustable

Precision adjustment with 4 points.



Materials

Materials in stainless steel and anodized aluminum.



Mechanical elements

Strong and durable mechanical elements.



Storage periods

Guarantees longer storage periods.



Aluminum window

Aluminum window for access and check of the chilling, inspection and set-up process.



Superior airtightness

High airtightness. Comprehensive gas control without leaks thanks to the foolproof closing of the door.



Customization

Customization to the brickwork. Custom manufacturing.

Vertical Sliding Door. (KAVIDOORS, Spain)

REFRIGERATED GUILLOTINE DOOR



Kaviddoors refrigerated guillotine doors are designed as a solution for cold rooms from (+0 °C) to (-40 °C) and access areas where there is no lateral clearance but there is clear height.



Easy assembly

Quick and easy installation with little maintenance. Pre-assembled door. Adjustable.



Great resistance and durability

Corrosion resistance, even in extreme environments depending on the finish.



Design

Easy-clean hygienic finish.



Food industry

Optimal for the food industry.



Materials

Materials in stainless steel and anodized aluminum.



Mechanical elements

Strong and durable mechanical elements.



Temperature

Suitable for humid areas.



Wiring

Hidden wiring.



Guide in installation

Convenient access to the guide during installation, adjustment or repair.



Superior airtightness

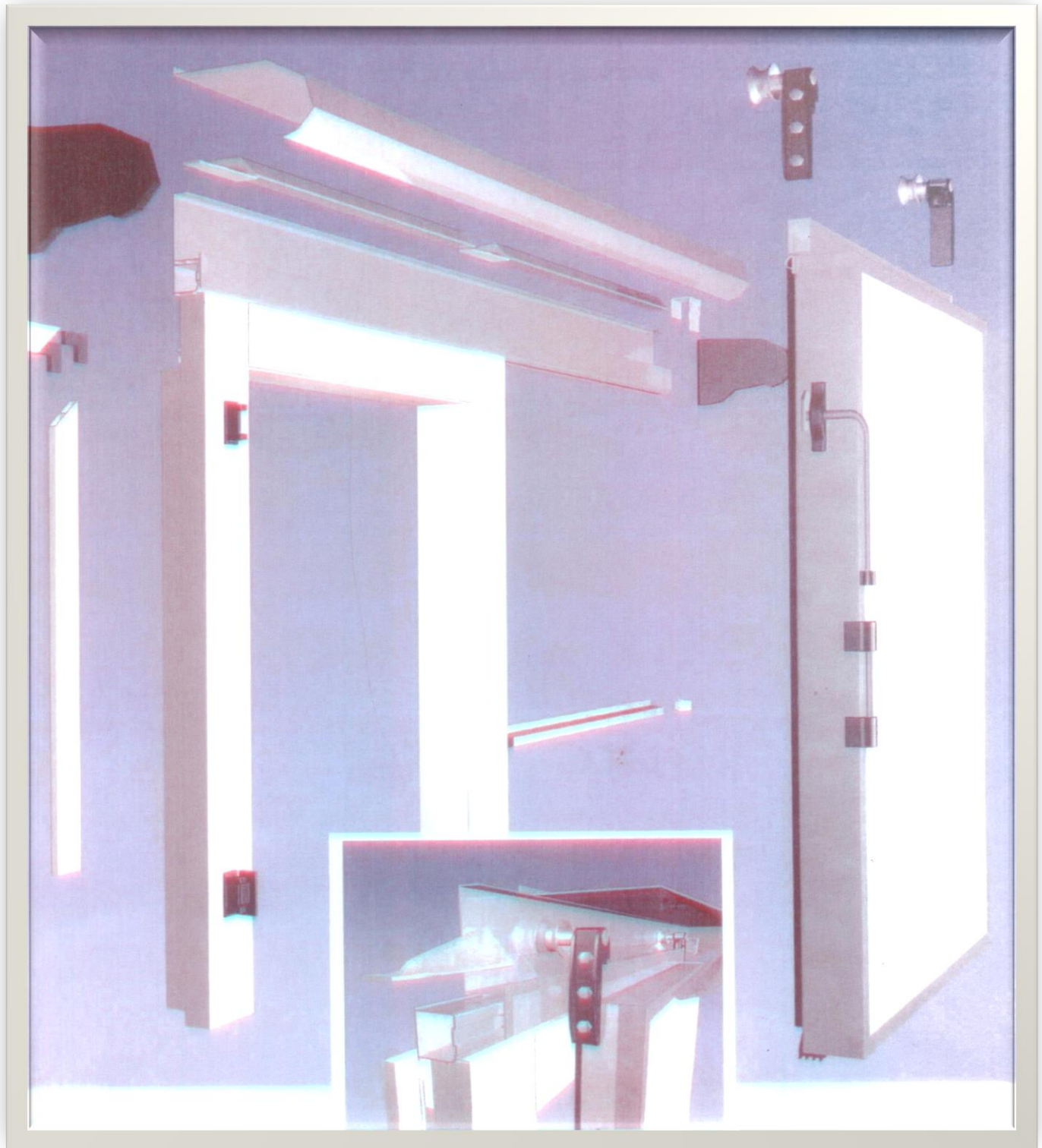
High level of airtightness and insulation.

Hinged Door.

Insulated hinged door manual injected by polyurethane insulation material density of 40 kg / m³ and an envelope from inside and outside the White sheet steel thickness of 0.5 mm and all accessories imported from Italy.

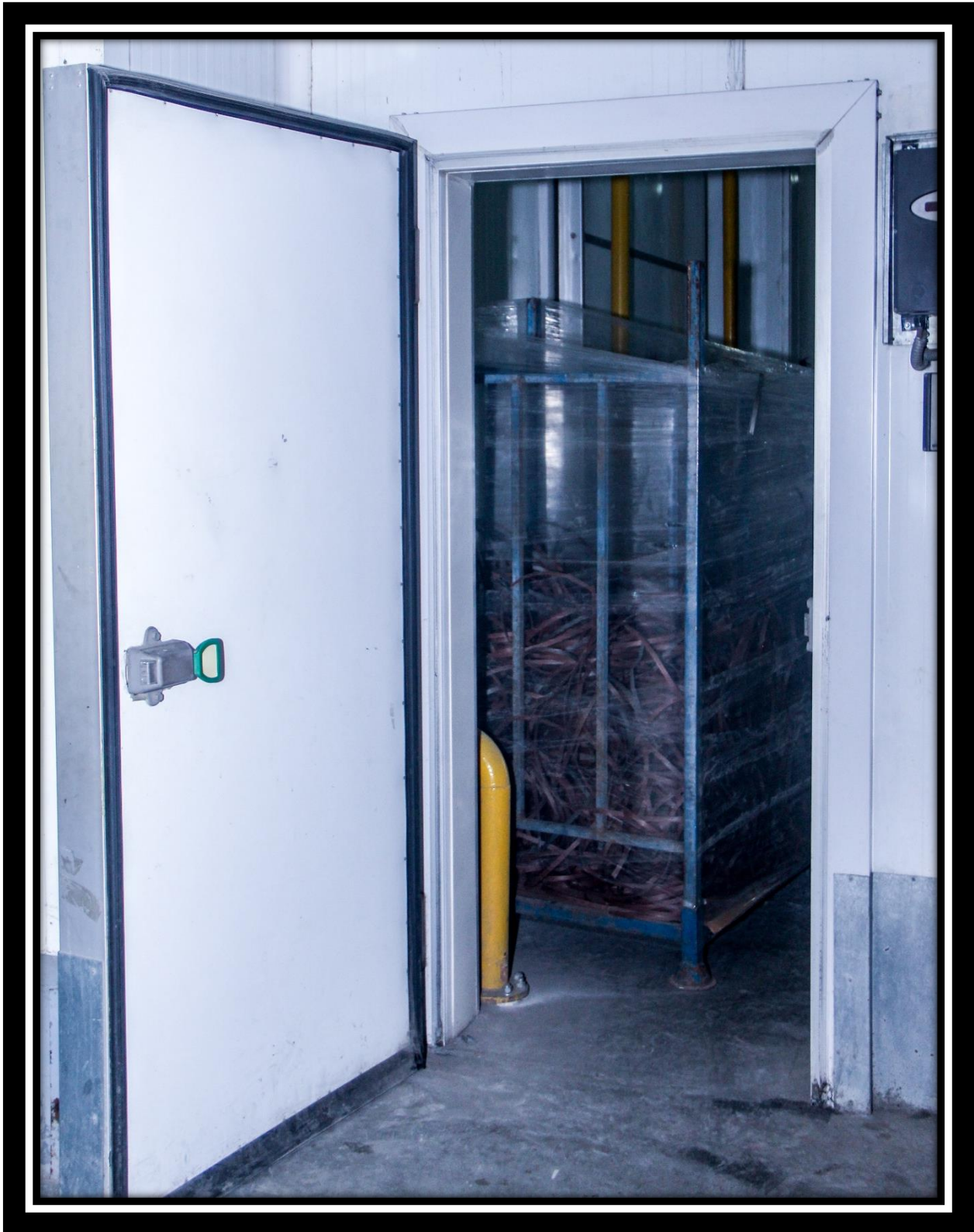


Hinged Door Accessories imported from Italy.













Hinged Fire Door.
(KAVIDOORS, Spain)



(KAVIDOORS, Spain)**SERVICE PIVOT DOOR**

Kaviddoors service pivot doors are specially designed for pedestrian **use in positive temperature environments**. Application in offices in the industrial, commercial and health sector such as laboratories, hospitals, clinics, clean rooms and radiology to **divide work areas or services**. They can be **one or two-panel**. High level of thermal and acoustic insulation.

Options

- ✓ Double key.
- ✓ Lock with the same key.
- ✓ Seal.
- ✓ Door closers.
- ✓ Electric opening by push button or command.
- ✓ Retention electromagnets.
- ✓ Lock with key and seal. Handle with keyhole and air pump included.
- ✓ Ceiling frame/embedded in the ground/ anodized.
- ✓ Panic bar.
- ✓ Airlock through electropiston.
- ✓ Control unit for lock system on several doors.
- ✓ Methacrylate sight glass with stainless steel/ rectangular aluminum oval porthole frames in flexible EPDM rubber.
- ✓ Guillotine gasket to prevent the passage of lower current.
- ✓ Customization of the frame to the brickwork.

Frame

Built with white lacquer aluminum profiles for panel mounting with trim included or on brickwork. It has an **oval EPDM gasket** to achieve **greater tightness, reduces noise and the passage of air currents**.

Panel

Compact **40 mm injection panel**, manufactured in one or two panels made up of a perimeter frame in white lacquer or anodized aluminum in case the panel finish is gray or stainless.

Panic Door.

Panic Door Accessories imported from Italy.



Swing Door.

Swing Door Accessories imported from Italy.



(KAVIDOORS, Spain)**POLYETHYLENE SWING DOOR**

Kaviddoors polyethylene swing doors are specially designed for interior use. With high traffic and in positive temperature environments, the excellent performance of against impact, scratching and corrosion, make this door an ideal solution to be installed in restaurants, kitchens, agribusiness, supermarkets and hypermarkets.

Options

- ✓ Hood system for overhead rail passage.
- ✓ Lock with key.
- ✓ Polyamide hinge. 90° opening and retention or steel hinge with 120° opening.
- ✓ White lacquer marking.
- ✓ Panel protections out of stainless steel-aluminum-polyethylene.
- ✓ Stainless steel or rectangular aluminum sight glass.

Frame

Built with polished silver 20 micron anodized aluminum profiles, with a white lacquer option. The thickness of this layer increases the **resistance to abrasion and corrosion** of aluminum and provides coloration to the parts through tinting. The anodized profiles are manufactured through processes certified by the **Qualanod quality seal**. 100 mm panel frame.

Panel

Solid polyethylene panel **form with a thickness of 15 mm** manufactured in **one or two panels** made with an anodized aluminum perimeter frame.

It has a sight glass porthole out of white polyethylene and methacrylate.

Spruce EPDM perimeter gasket.

(KAVIDOORS, Spain)

INJECTION SWING DOOR



Kaviddoors injection swing doors are specially designed for **intensive use in positive temperature environments**. Ideal for installing in hotels, clinics, hospitals, restaurants, kitchens, shops, agribusiness, supermarkets and hypermarkets.

Photo: standard model left panel. Optional right model.

Options

- ✓ Hood system for overhead rail passage.
- ✓ Polyamide hinge with 90° retention
- ✓ Lock with key.
- ✓ Custom stainless steel or rectangular aluminum sight glass.
- ✓ Rigid swing door lock on plate.
- ✓ Custom made stainless steel/5 mm PE-HD bumper/polyethylene wing fender.
- ✓ Flexible hinged door in 5 mm PVC resistant to low temperatures. Food-safe certified.
- ✓ Single panel.

Frame

Frame and trim adaptable both to any thickness as well as brickwork or aluminum panel.

1 panel	Maximum beam width	1.2 m
	Maximum passage height	3 m
2 panels	Maximum beam width	2.4 m
	Maximum passage height	3 m

Panel

Compact 40 mm injection panel, made of one or two panels made of white colored band sheet and white PP with a frame formed perimeter by white lacquer aluminum corner piece and with **compact EPDM gasket**.

It has an oval sight glass as standard and lower polyethylene protection.

(KAVIDOORS, Spain)**PVC SWING DOOR**

Kaviddoors PVC swing doors are the ideal solution for the partitioning of spaces and closures of air currents. They allow constant two-way traffic in commercial, industrial and cold room environments and withstand temperatures down to -25 °C. Installation in any type of food industry, supermarkets, hypermarkets, hotels and restaurants.



- 1 90° opening hinge.
- 2 Frame detail.
- 3 Profile detail of the door panel.
- 4 Stainless steel porthole sight glass detail.



Colors

We have a **wide variety of RAL colors** to meet the needs of each client.



Fittings

- Hinge made entirely of 20 micron silver anodized Duralinox. **Positional opening of 90°**. Provided with closing force regulator.
- **Return spring system**. Adjustable tension closure mechanism.
- Connecting tube: allows to assemble horizontal and vertical profiles in a perpendicular and solid manner.
- Safety sling to guarantee protection to pedestrians and vehicles in the event of an accident.
- Bottom fixing using a wall or floor mounting system. Top fixing through a wall or lintel mounting system.



ISOTHERMAL FLEXIBLE SWING DOOR



Kavidors isothermal flexible swing doors can be **single or double leaf, with interchangeable parts and transparent antibacterial windows**. Ideal for use in refrigerated rooms, hospitals, supermarkets, the agricultural sector.

Options

✓ One or two panels.

✓ Doors with heating cables for freezing applications.



Eliminate night door

Eliminate the use of a night door.



Durability

High durability against impacts and safety.



Ice

Greatly reduces ice build-up.



Easy assembly

Quick and easy to assemble.



Lightness

Less physical effort to operate.



Design

High resistance and hygienic guarantee.



Thermal protection

Comprehensive thermal protection provides tremendous energy savings.



Energy saving

At least 25% energy can be saved on chillers and 33% in freezers.

High Speed Rapid Door.

(KAVIDOORS, Spain)

Rapid door is fast opening and closing during the 5 seconds at most, and it is equipped with automatic control in addition to the electrical panel and the main body of the door is made of lather suitable for required temperatures and its sections is made of metal structure this section completely imported from West Europe.



HIGH SPEED REFRIGERATED DOOR T+0°C and -20°C self-repairing



Kavidoors single canvas high-speed refrigerated doors are specially designed as a solution to **limit condensation in refrigerated rooms with a high load of humidity** and its access. Use for refrigerated rooms for **chiller rooms (+0 °C)** and **freezer rooms (-20 °C)**. Withstands temperatures down to -25 °C. Self-healing function.

HIGH SPEED CANVAS REFRIGERATED DOUBLE DOOR



SELF-REPAIRING HIGH-SPEED ROLLER DOOR



Kavidoors self-repairing high-speed roller doors provide a solution to the partitioning of work areas, both indoors and outdoors, with high traffic of people and vehicles with the need for quick opening and closing maneuvers. Thanks to its self-healing function, if it receives an impact, the canvas comes off the guides without suffering any damage and then reverts back to its original position to continue working normally.



- 1 High speed roller door canvas detail.
- 2 Self-repairing high-speed roller door profile.
- 3 Control panel.
- 4 Self-repairing canvas detail.



Folding Door.
(KAVIDOORS, Spain)



Shutter Door.

(KAVIDOORS, Spain)



Industrial Overhead Sectional Door.

All Accessories Imported from Germany.

Insulated sectional door can use in all docking area refrigerated areas and it consists of number of leaves injected by polyurethane density of 40 kg/m³ and each leave height is 60 cm and thickness of 4 cm and envelope of both with White sheet steel and imported accessories and comprehensive lock.

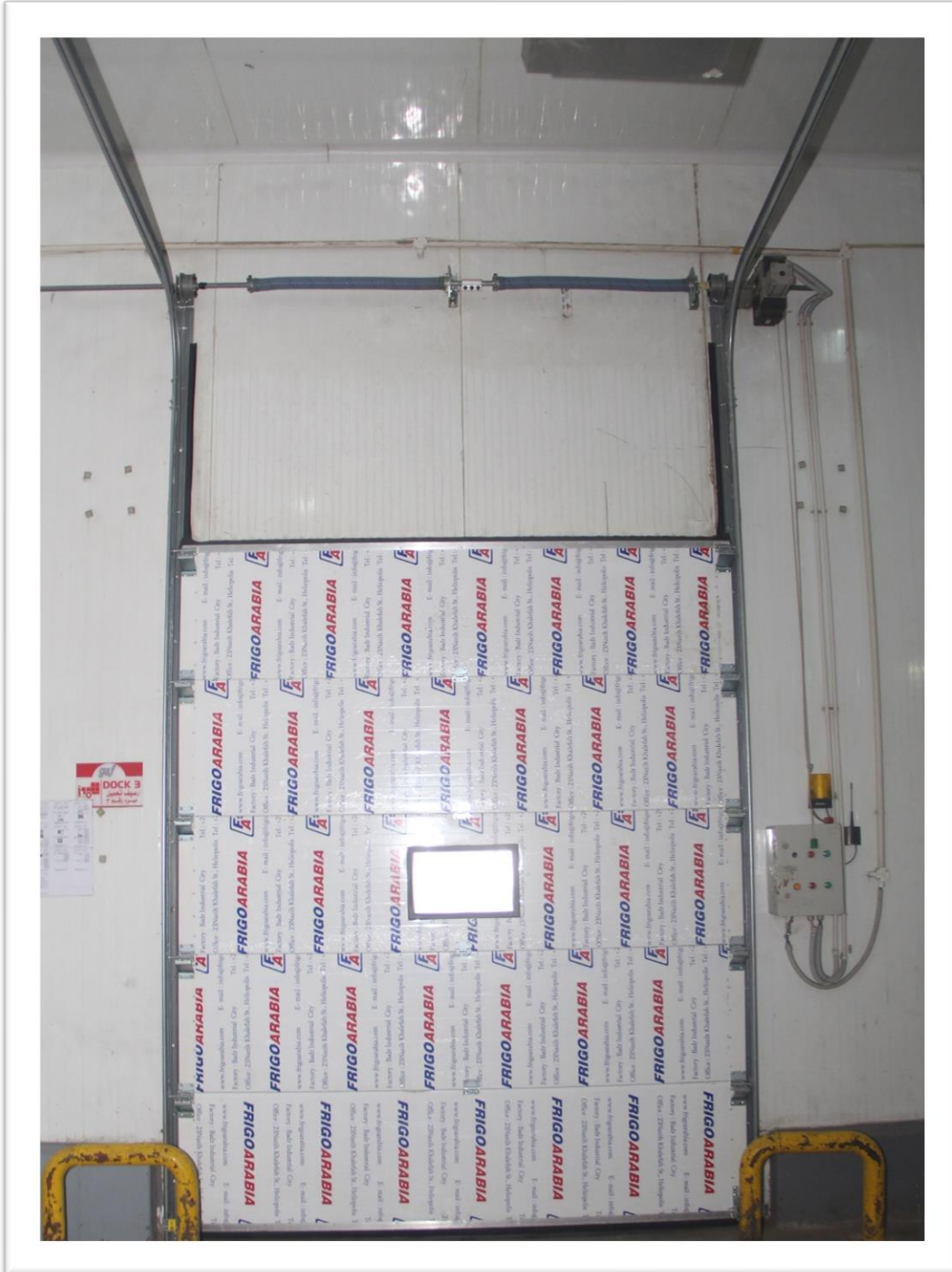






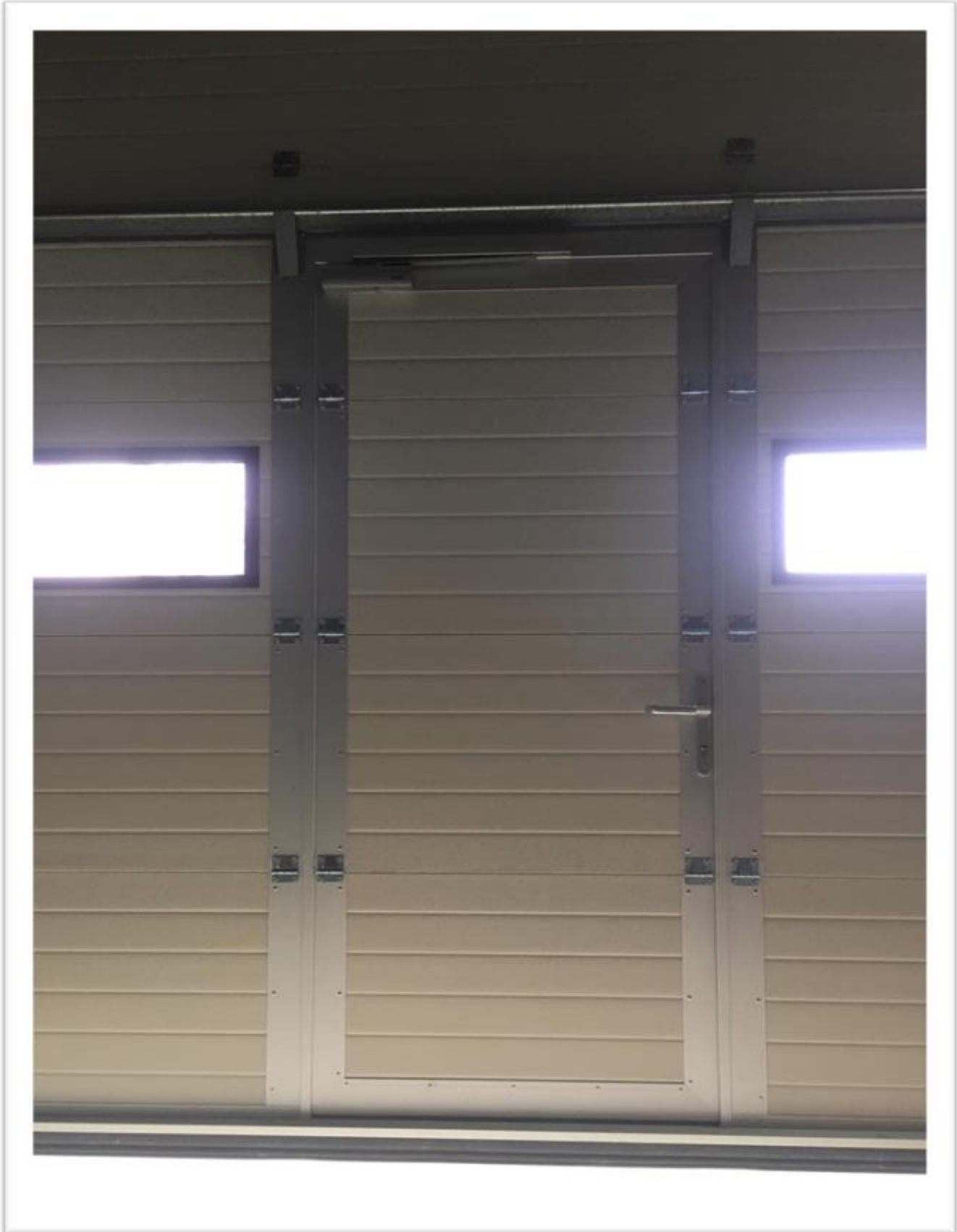


Automation System for Sectional Door.
(German Origin)



Sectional Doors Includes Hinged Door.

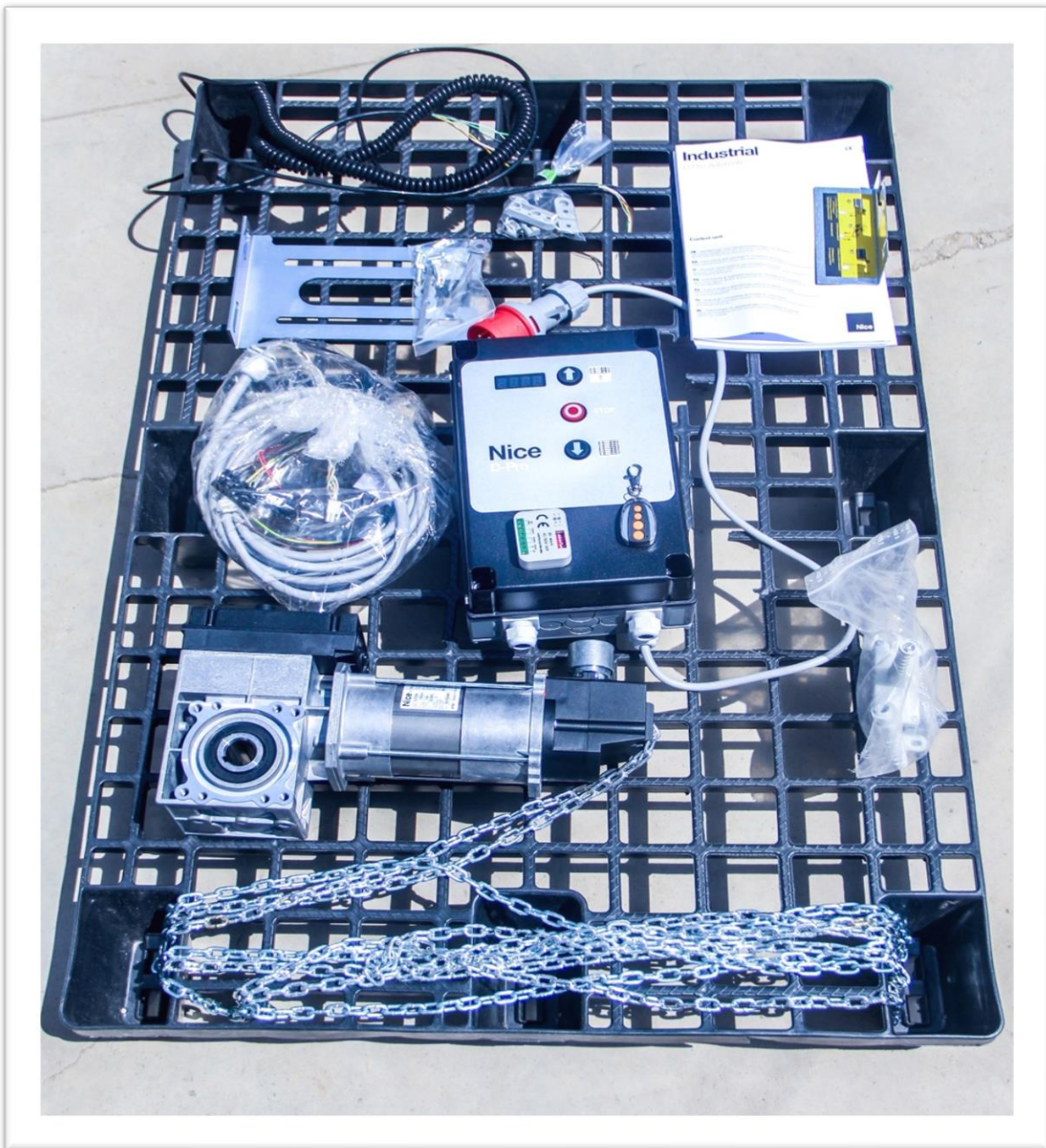




Doors Automation System.

(German Origin)

Frigo Arabia imported from Europe a heavy-duty automation unit for all the above types of doors, and it consists of electric motor with electronic encoder, control unit (internal & external), safety sensors as (photocell, safety edge & etc.) and many other options as remote control, radar sensor, spiral cables, push buttons & etc.



Docking Unit.

(ALAPONT, Spain)

Docking Unit consisting of (Dock Leveler - Dock Shelter - Industrial Sectional Door) with Automatic System for each unit contains electrical panel of the door & imported from West Europe.

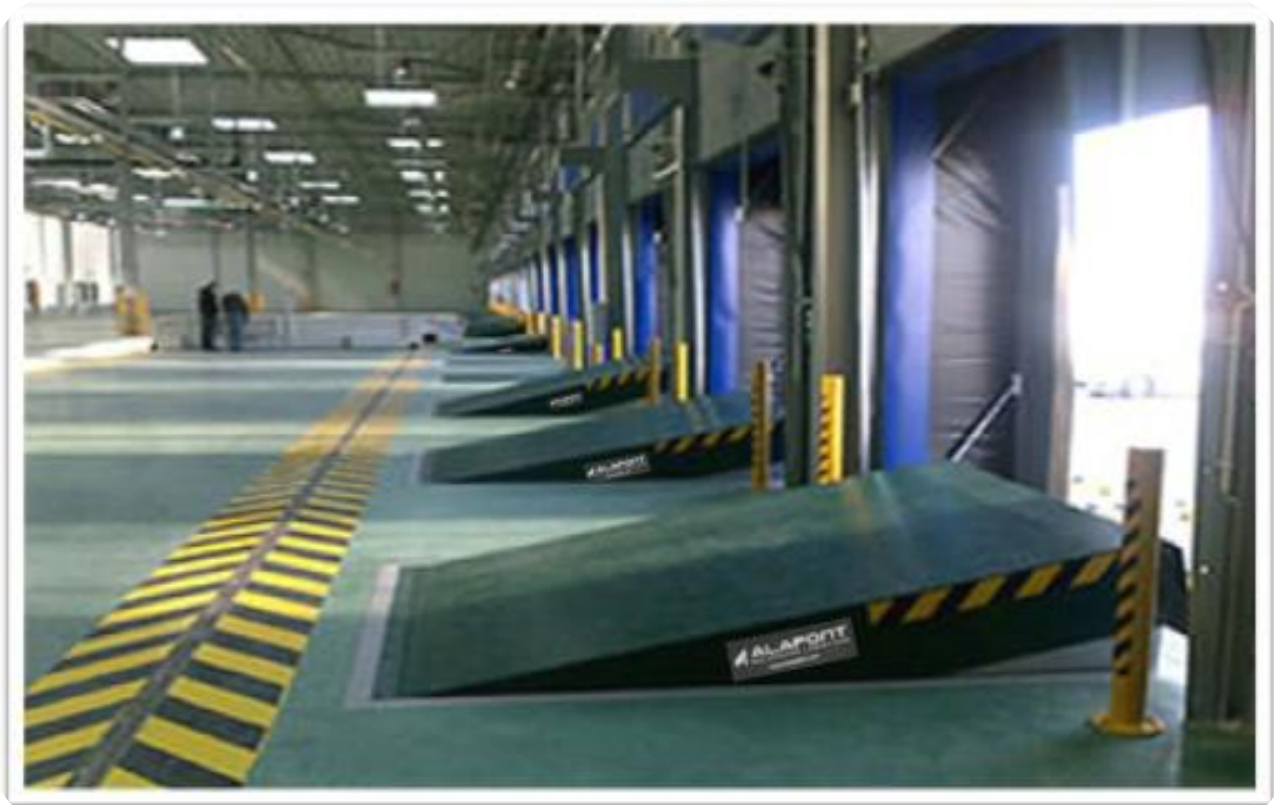




Dock Leveler.

(ALAPONT, Spain)

Dock leveler manufactured specifically for connecting cooled corridor & the cooled truck where the main function is to lift its level for the same level of the cooled truck and facilitate the transfer of products and goods & imported from West Europe.



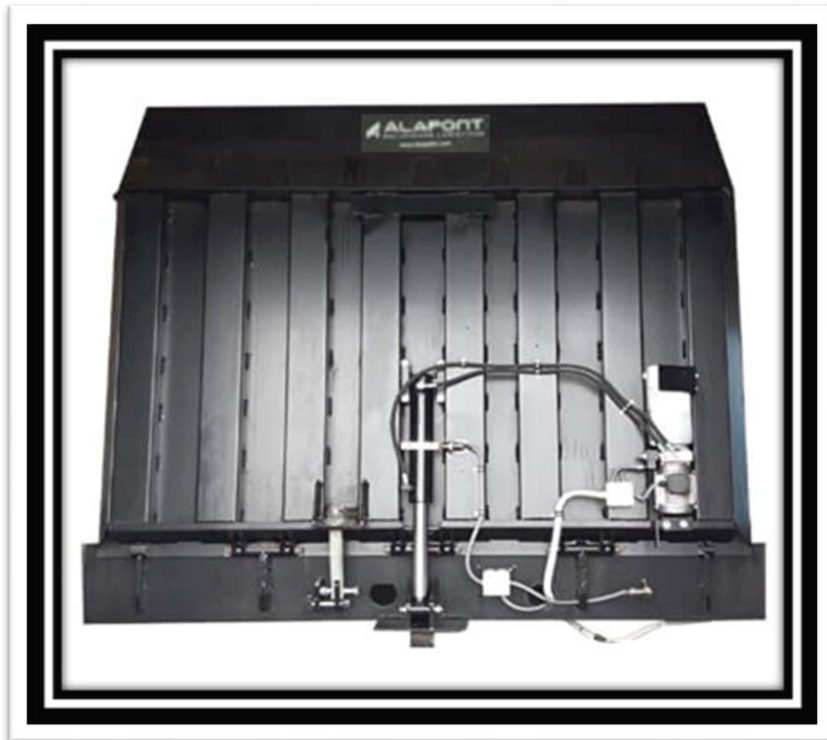
Standard Dock Leveler.



Smart Dock Leveler.



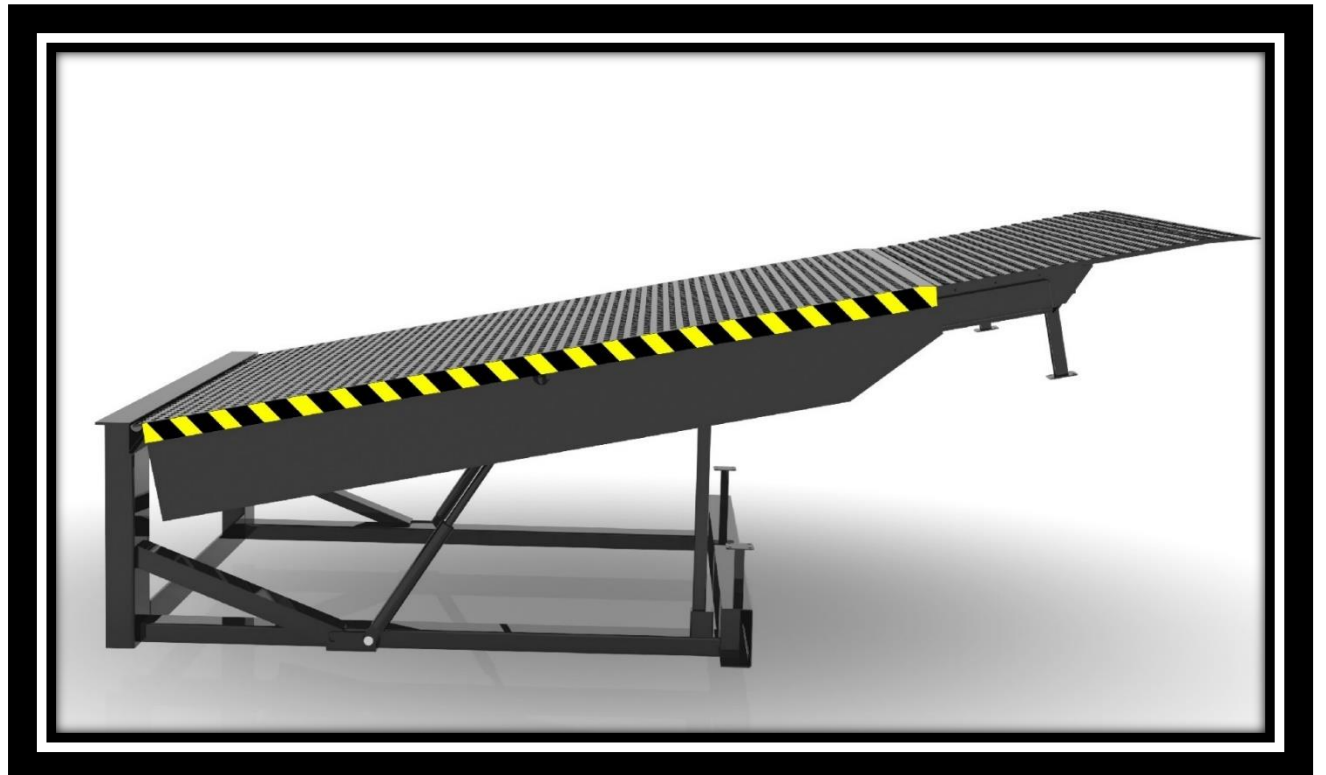
Vertical Dock Leveler.



Mechanical Dock Leveler.



Telescopic Dock Leveler.



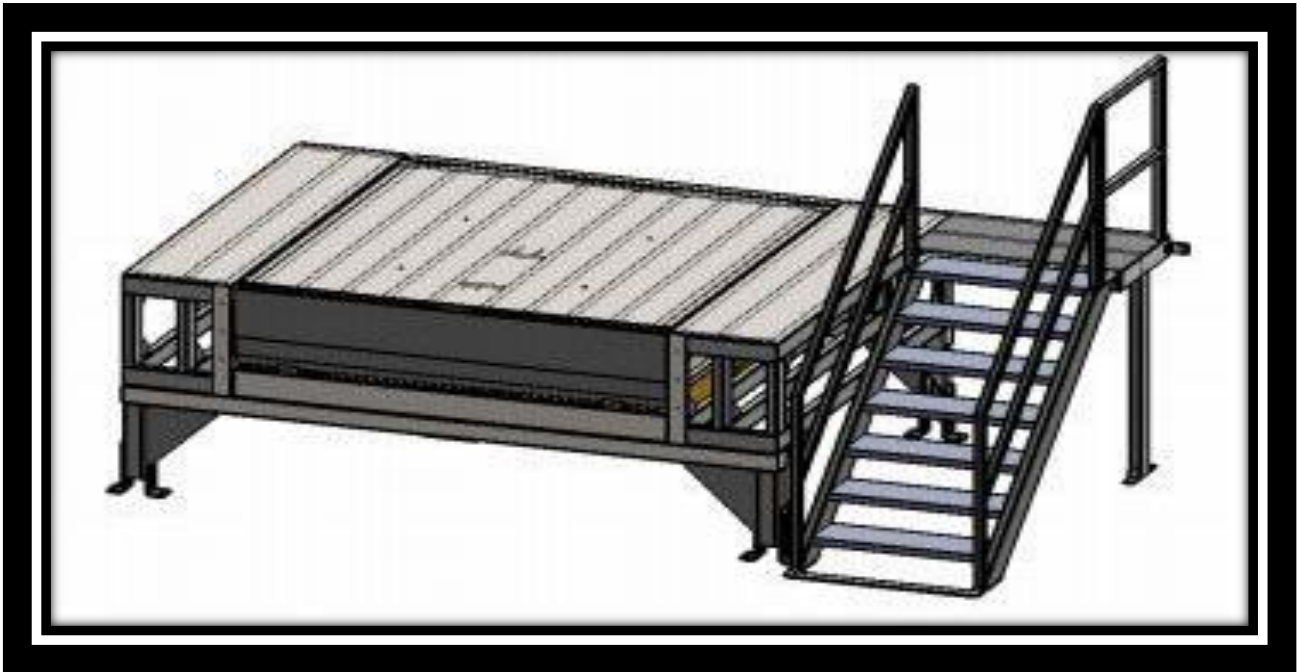
Scissors Dock Leveler.



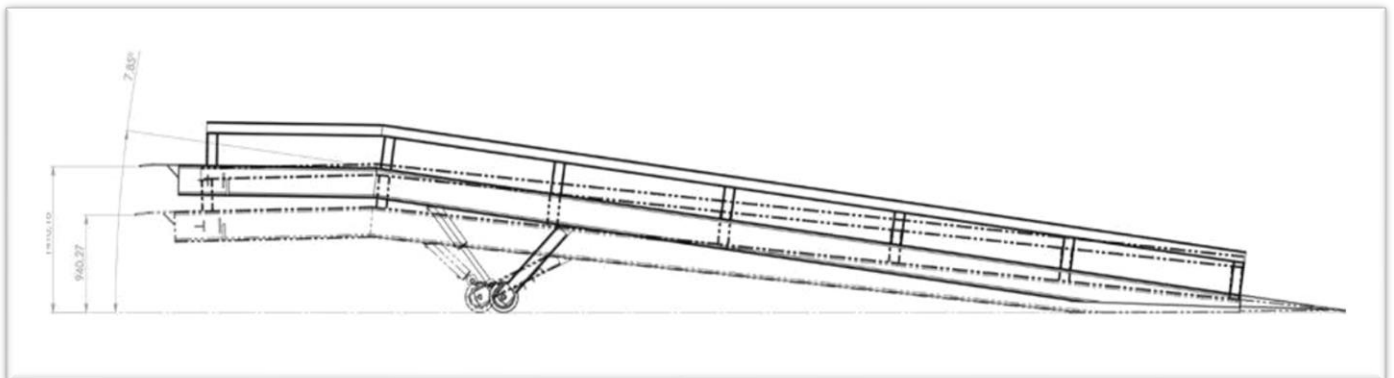
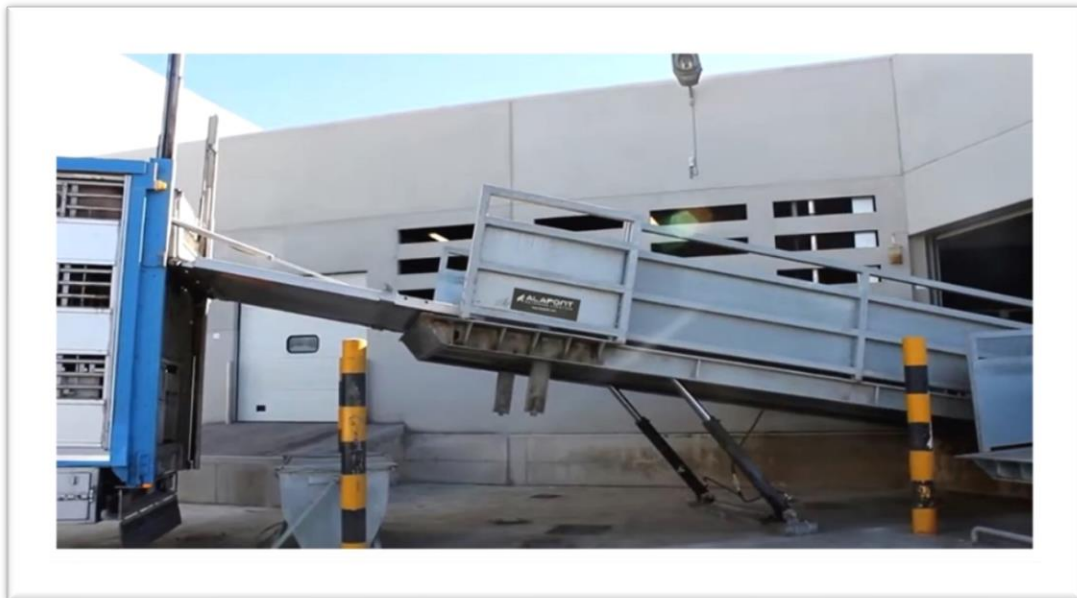
Mini Dock Leveler.



Iso-Thermal Tunnel.



Yard Ramp (Fixed or Movable)



Advanced System Rubber Bumpers.



Square Rubber Bumpers.



Rectangular Rubber Bumpers.



Standard Dock Shelter.

(ALAPONT, Spain)

The dock shelter is made from insulated rubber mounted between the insulated sectional door and truck door specially designed to keep the temperature cooled without leaking & imported from West Europe.



Inflatable Dock Shelter.

(ALAPONT, Spain)



Industrial Air Curtains.

(KAVIDOORS, Spain)



Air curtains AIRTEK

The new AIRTEK comes with modern design, high performance parameters and full range of accessories. AIRTEK is synonymous to modernity, superior and advanced technology.



AIR CURTAINS



Air curtains are equipment that creates an invisible air barrier in the interior and the outside of a chamber, maintaining the thermal conditions in it and allowing the passage of people or vehicles. We have two models:

- Air curtains AIRTEK
- Industrials air curtains AIRPRO.

Panel COMFORT

- ✓ Manual temperature regulation.
- ✓ Fan speed change.
- ✓ Control up to 2 pcs of AIRTEK air curtains.



MAGNETIC doorswitch

Allows to activate/deactivate air curtain depending on opening of entrance doors.

BMS

Delivery of basic signals to Building Management System)



PVC Strip Curtain.



(KAVIDOORS, Spain)

PVC SLAT CURTAIN



Kaviddoors PVC slat curtains are an economical solution for **places that require insulation, temperature control or environmental separation**. Designed for negative temperature controlled environments for use in **refrigerated spaces for chiller (+0 °C) and freezer (-20 °C) rooms**. Used especially in supermarkets, small shops and in the meat and fishing industries. Ideal for rooms that require compliance with health standards.

Options

- ✓ Installation on the ceiling inside the recess or on the wall.

- ✓ L-shaped extruded aluminum frame finished in white with white lacquer aluminum interior trim.

Fittings

Support tube, spacers and fixing clips. Made of 1.5mm thick AISI 304 2B stainless steel. Stainless steel accessories and screws.

Slat

In quality, low temperature, flexible and transparent bluish PVC. Measures of 200 x 3 mm for chiller and freezer rooms. Individually removable.

Guides

If the curtain is sliding, the guide and carriage are made of 20 micron anodized aluminum with PVC bearings.

Maximum beam width	4 m
Maximum passage height	6 m



Easy assembly

Simple and fast installation with minimal maintenance. Light slats.



Slat

Easy replacement of slats



Fixing

Fixing inside the frame, on the ceiling, on the wall or outside.



Hygiene

Hygiene and resistance in extreme environments.



Durability

Durability when rotating the brackets on an axis.



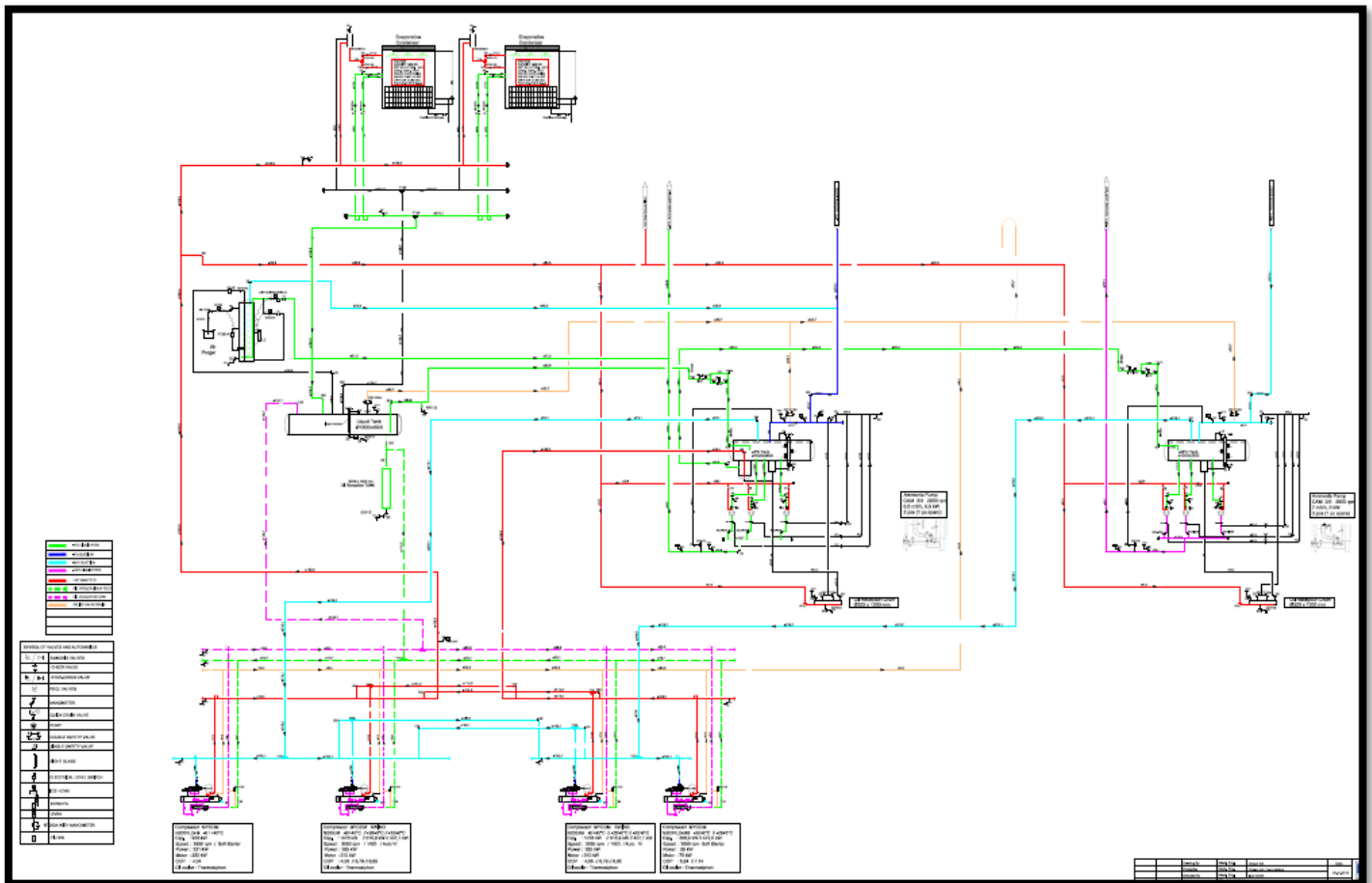
Fixing tube and staples

Fixing tube and stainless steel clips with individually removable slats.

Industrial Refrigeration.

Frigo Arabia owns its staff to **design, install, commissioning, maintain & after sale service** for all Industrial Refrigeration projects (turnkey Job), so we offer a complete customized solutions for our customers with taking care about quality, sustainability, efficiency, operation & cost.

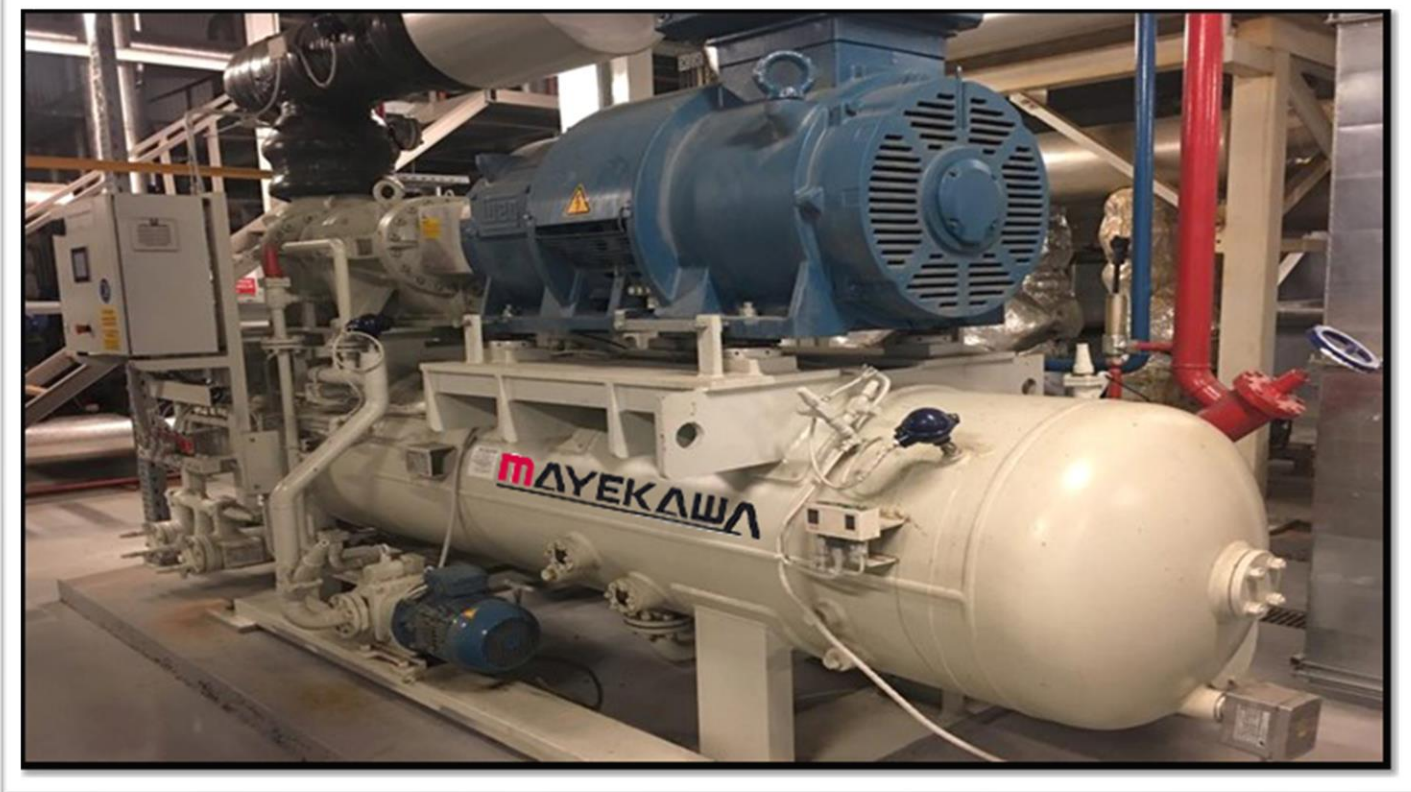
we have one of the biggest market shares related to cold storage field in Egypt, with history list includes more than one Million Tons product capacities of cold storages. Also, we have a good relationship with leading companies Worldwide which are specialists in that field, so together we could provide an efficient method to achieve our customers' needs.



Ammonia Refrigeration.











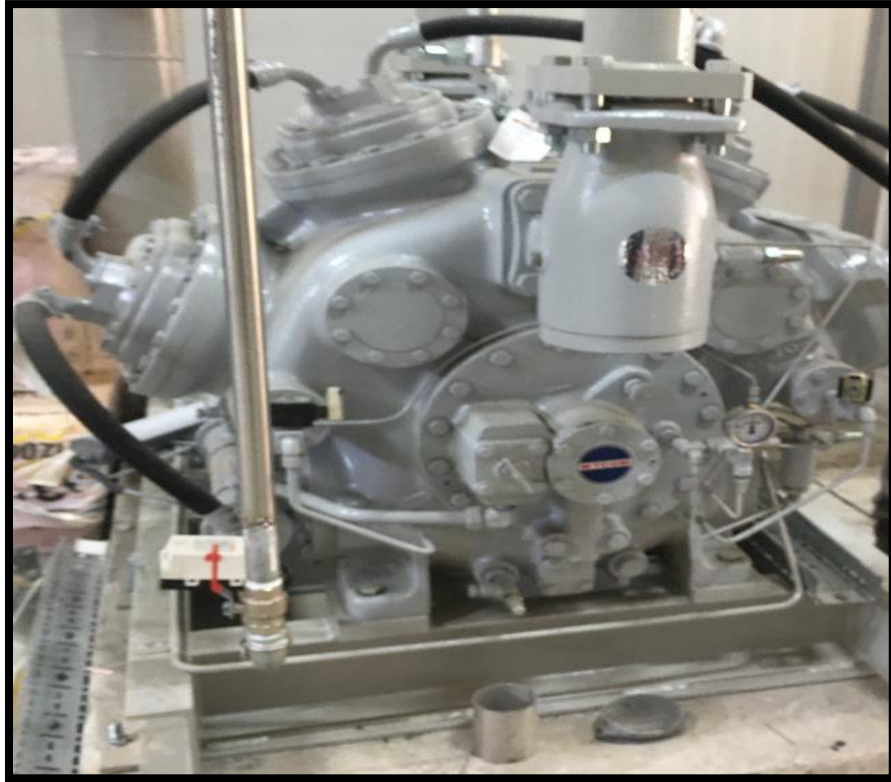




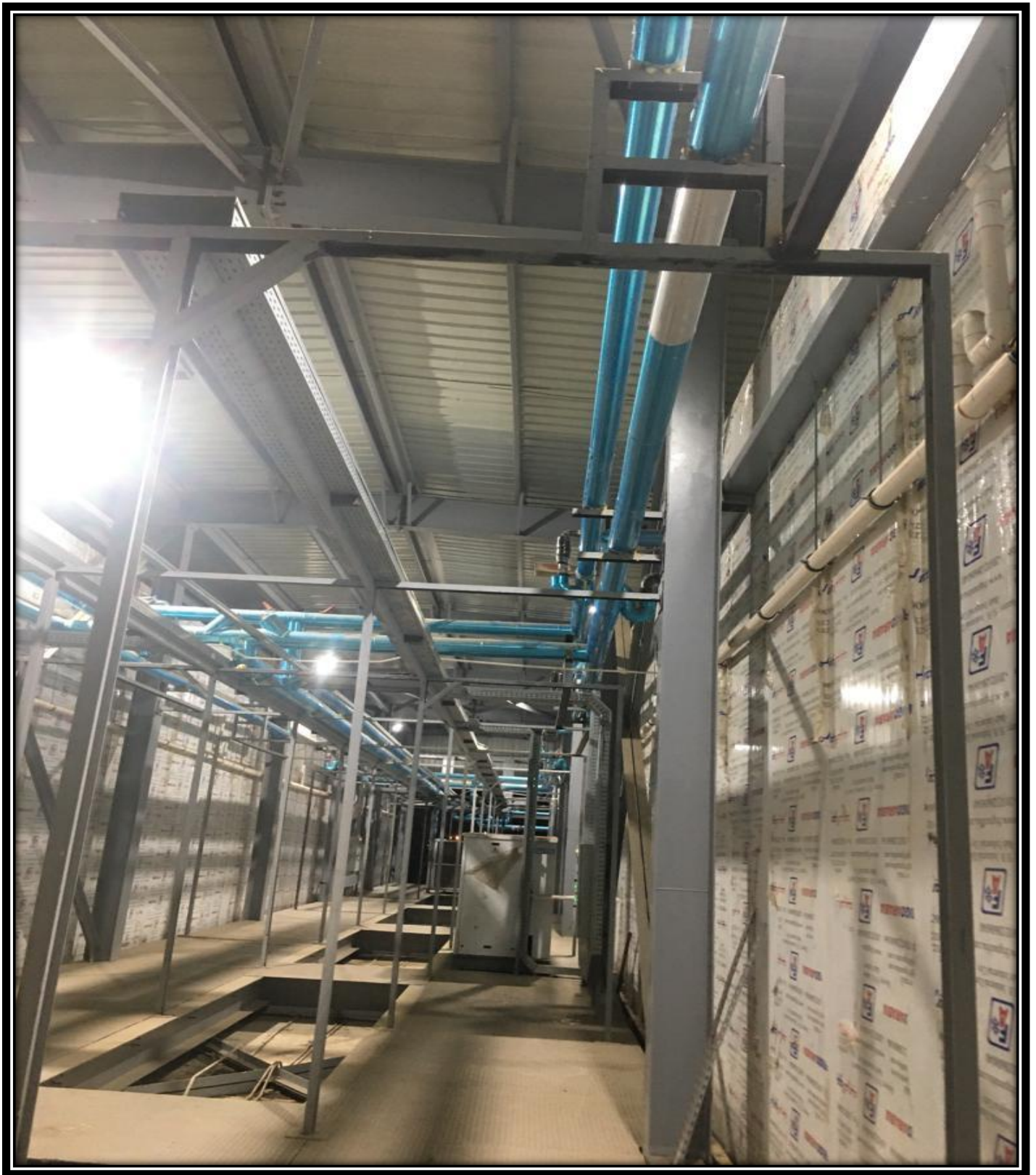




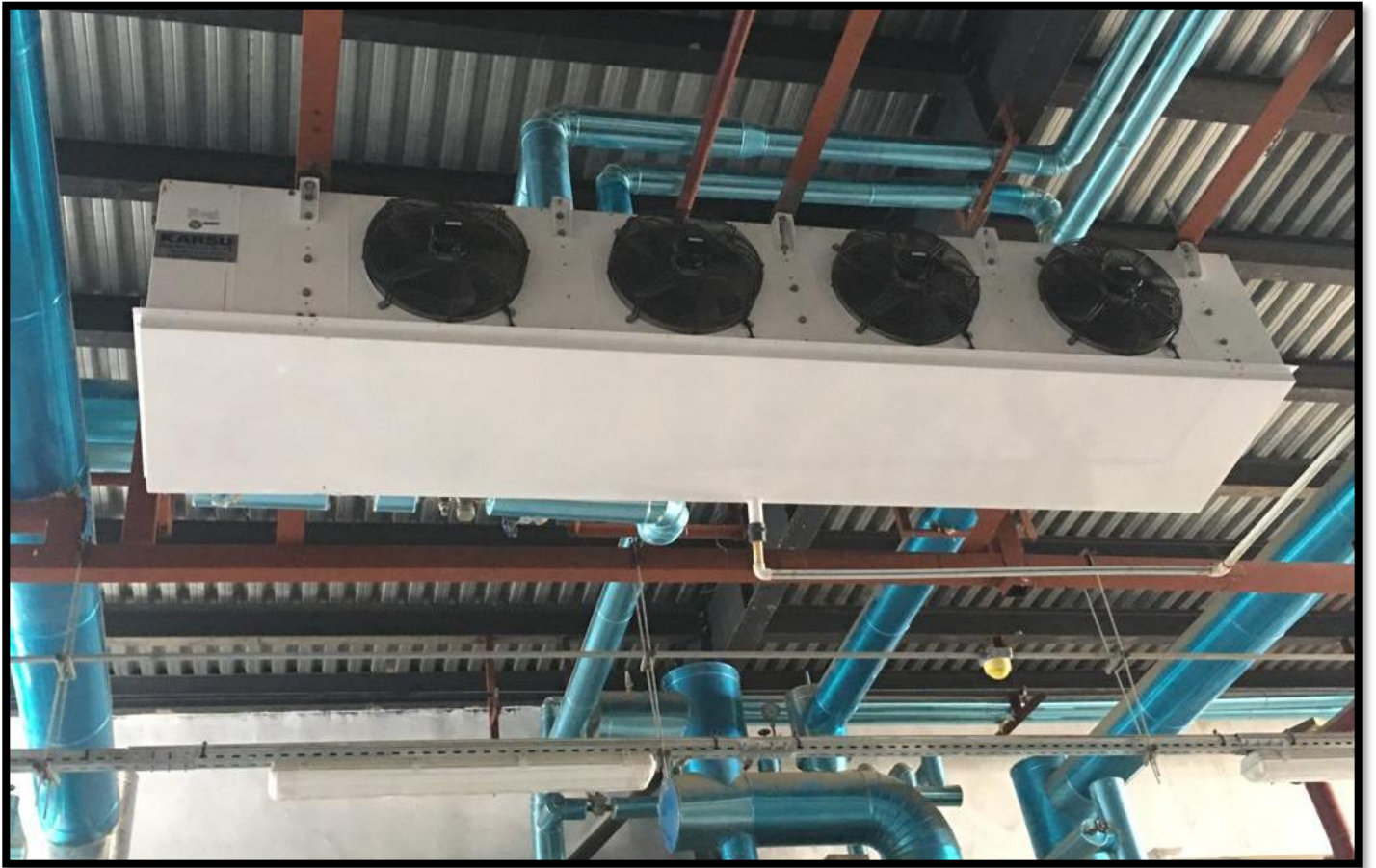




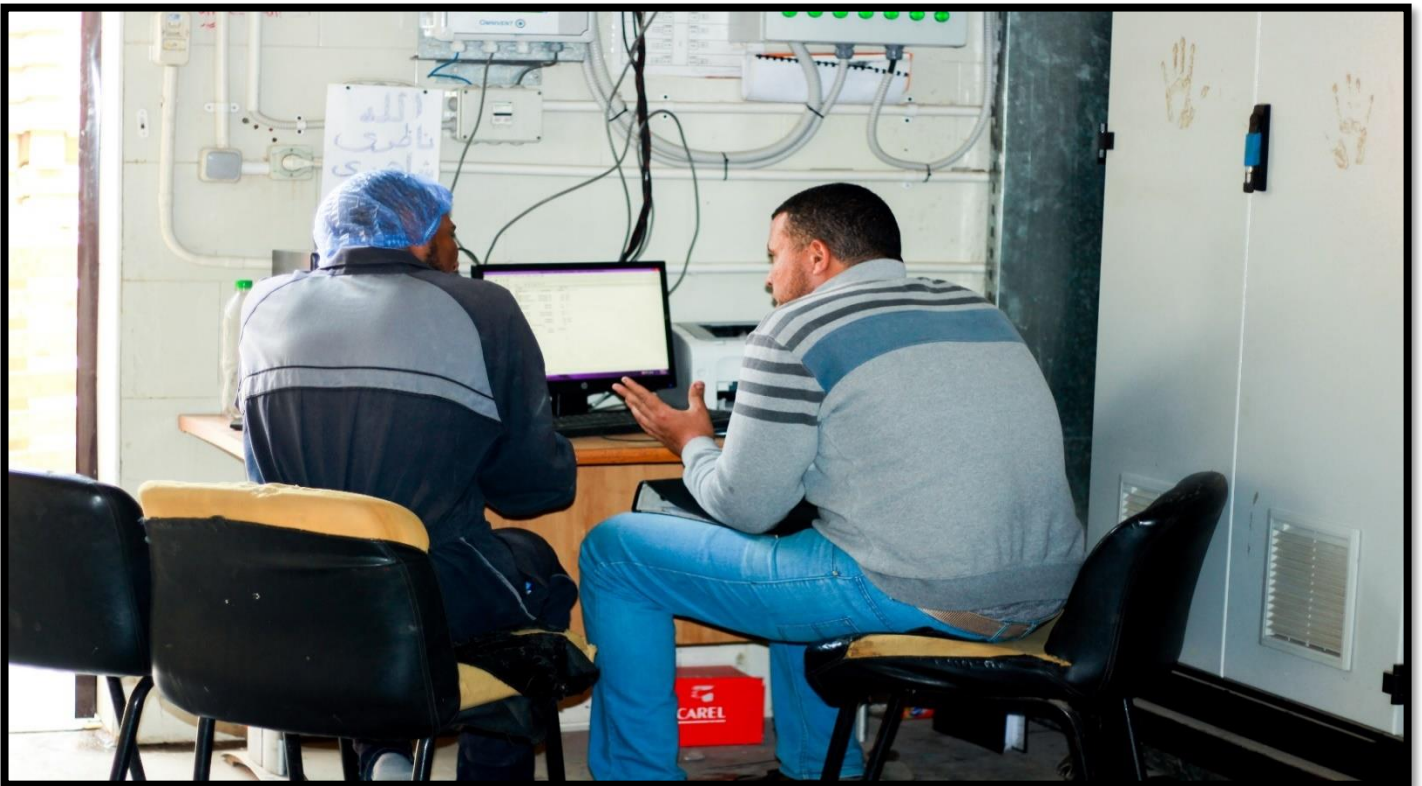
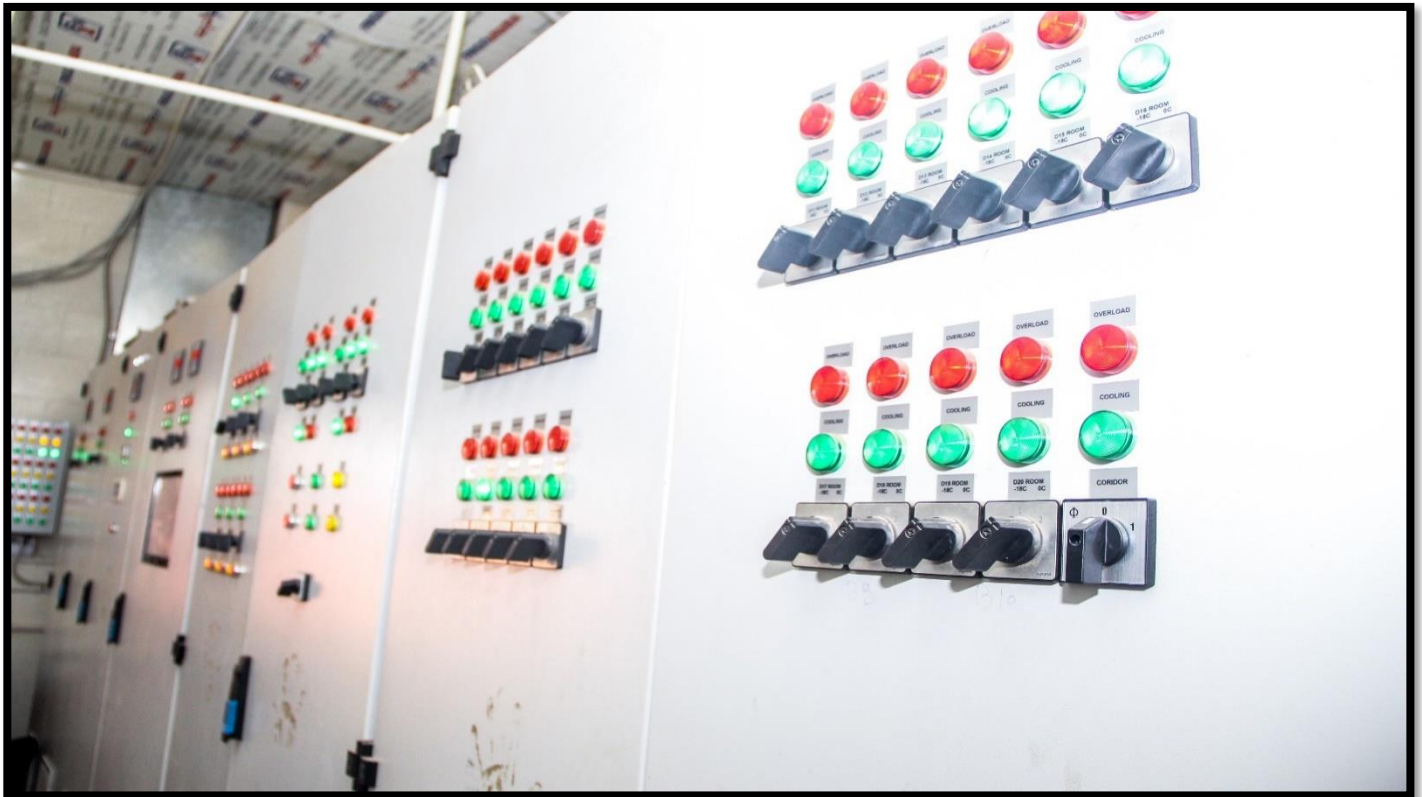




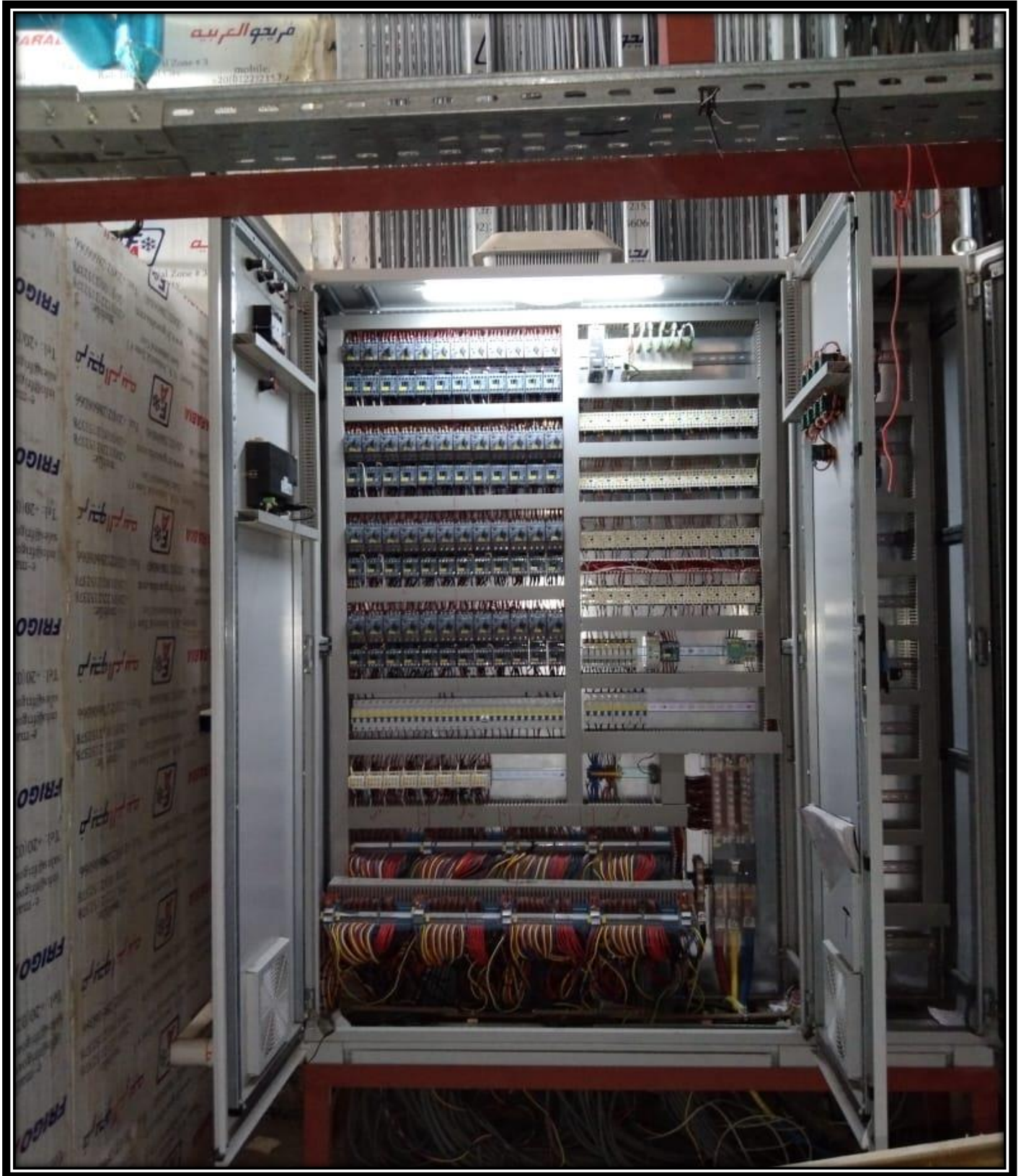














Compressors Rack.







Chiller Unit.





Package Units.
(Karsu Company)



FRIGOARABIA Industrial Refrigeration



Pre-Coolers System.



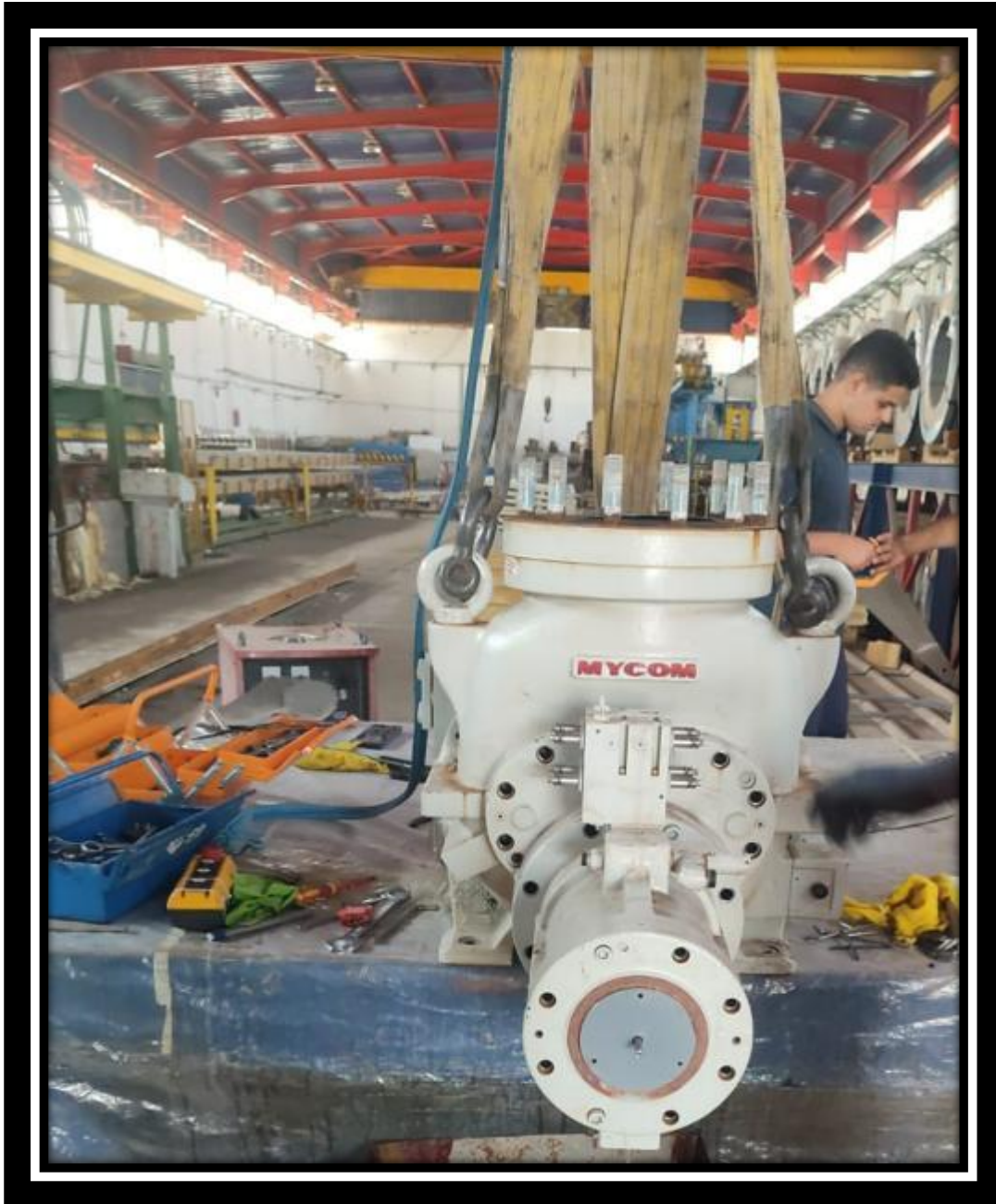


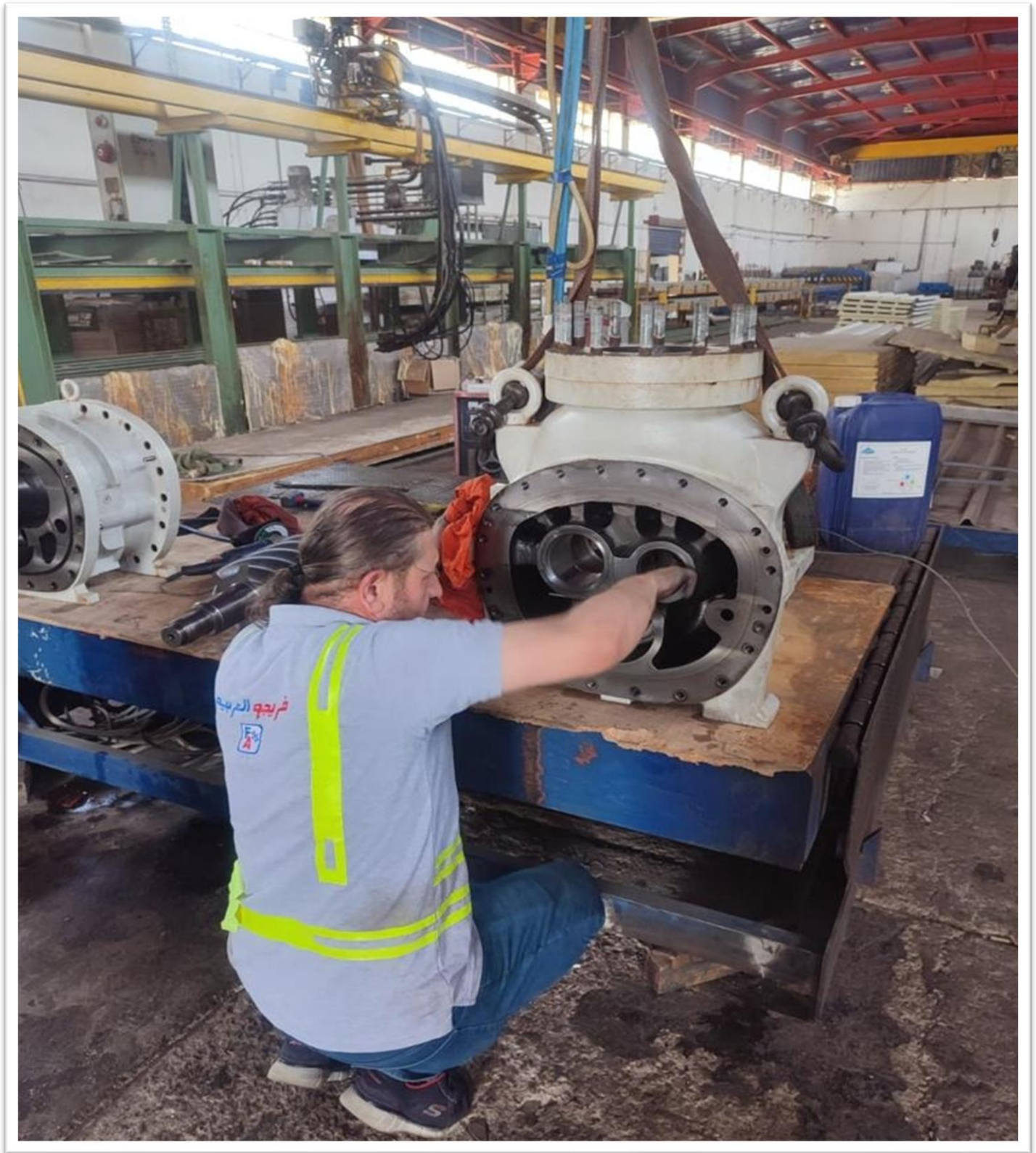
IQF & Freezing Tunnels.



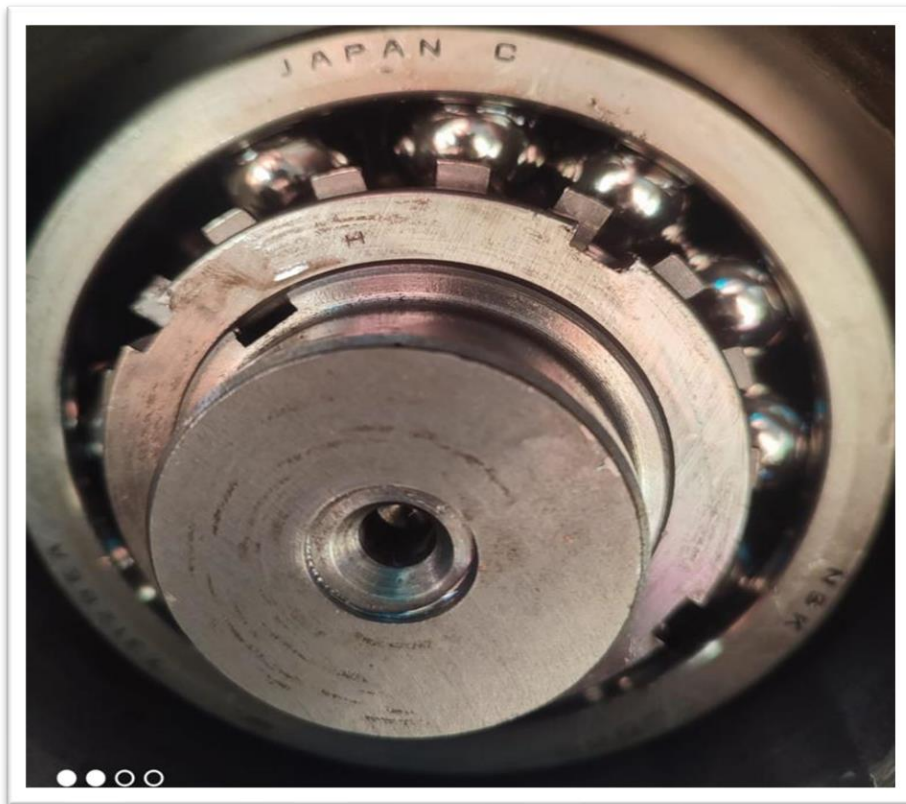
Maintenance & **After Sale services.**

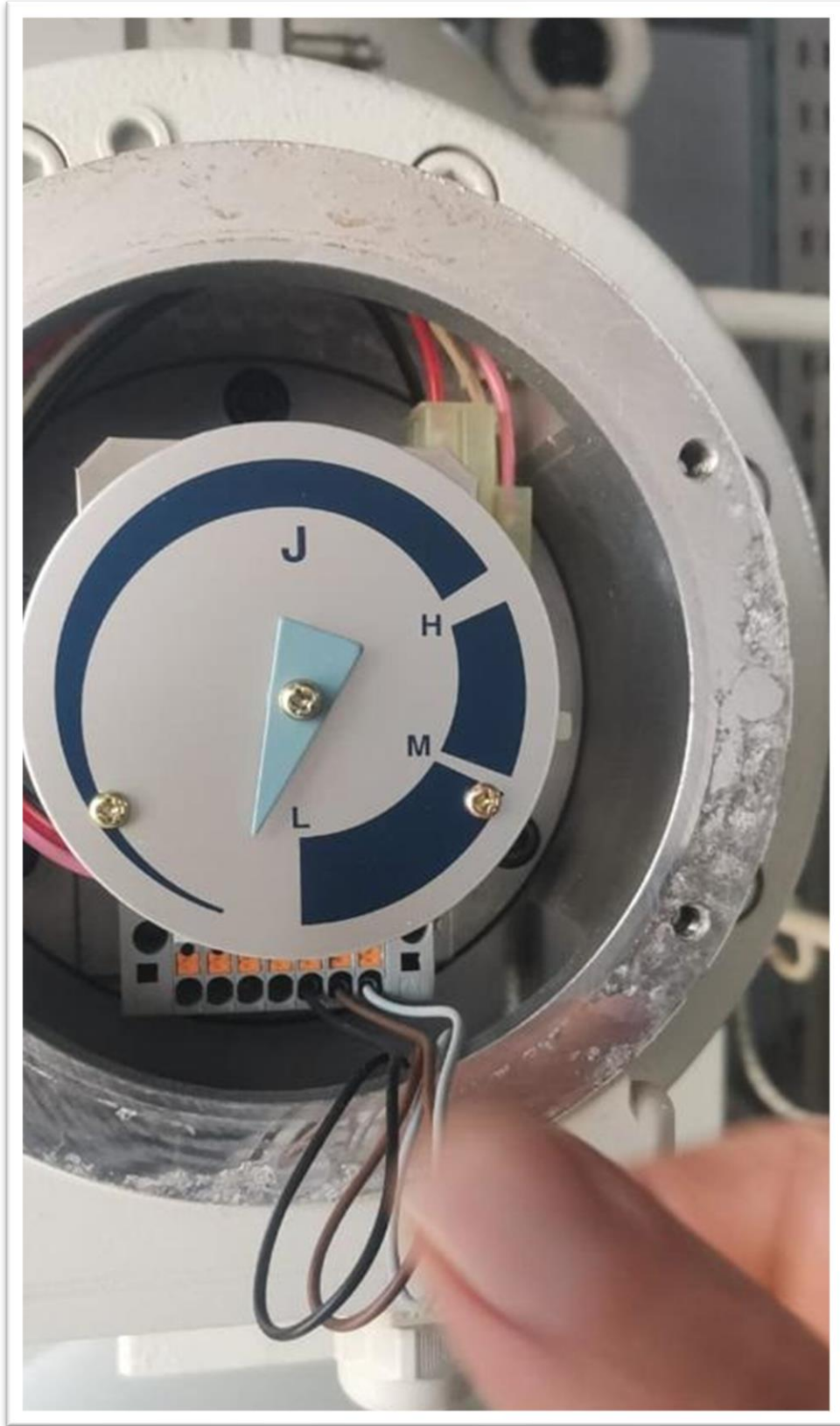
Frigo Arabia is certified as exclusive representative in Egypt for Maintenance & after sale services from Mayekawa MYCOM Company, Middle East.





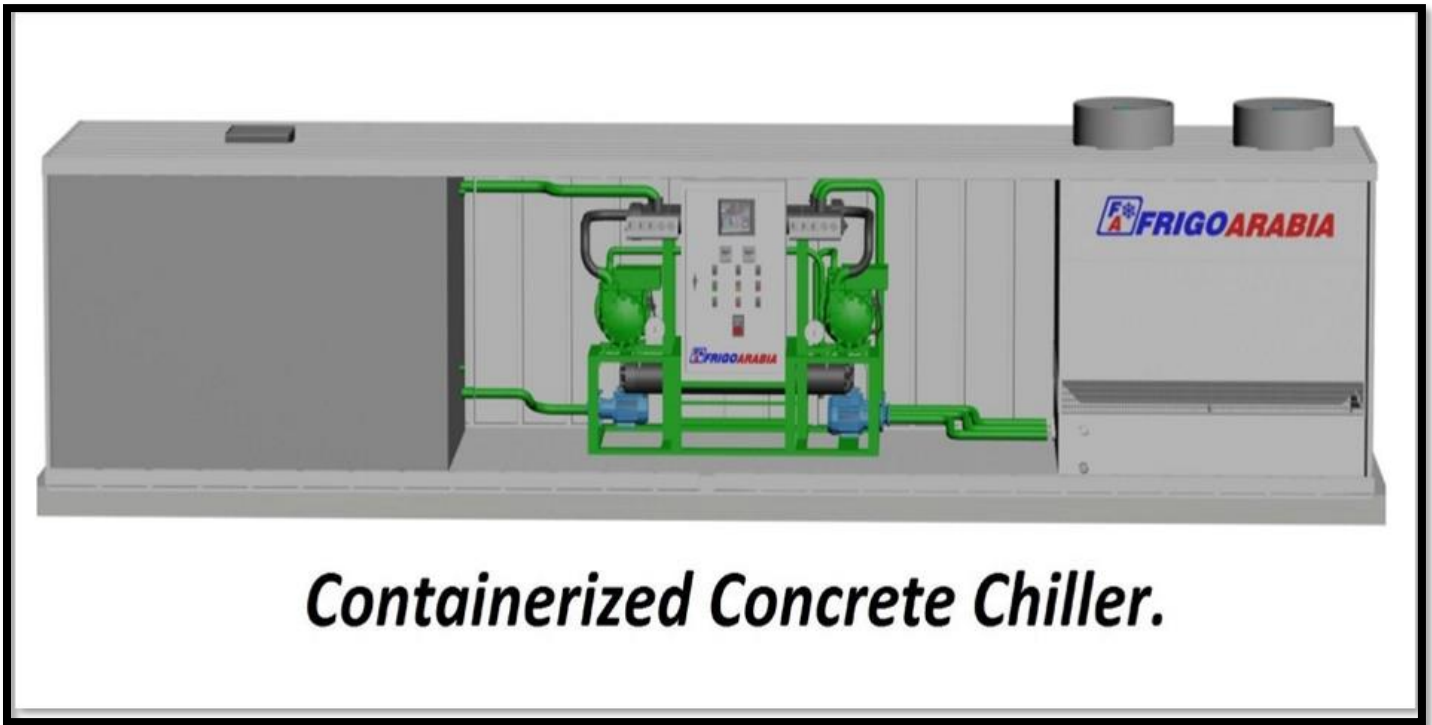








Frigo Arabia's Industrial Chillers



Containerized Concrete Chiller.



Some of Frigo Arabia Mobile Chiller Models.

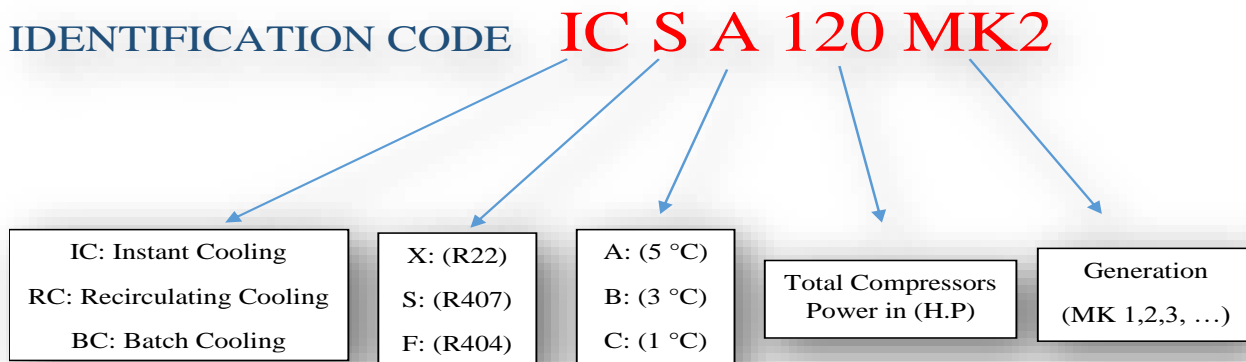
One Circuit Chiller:

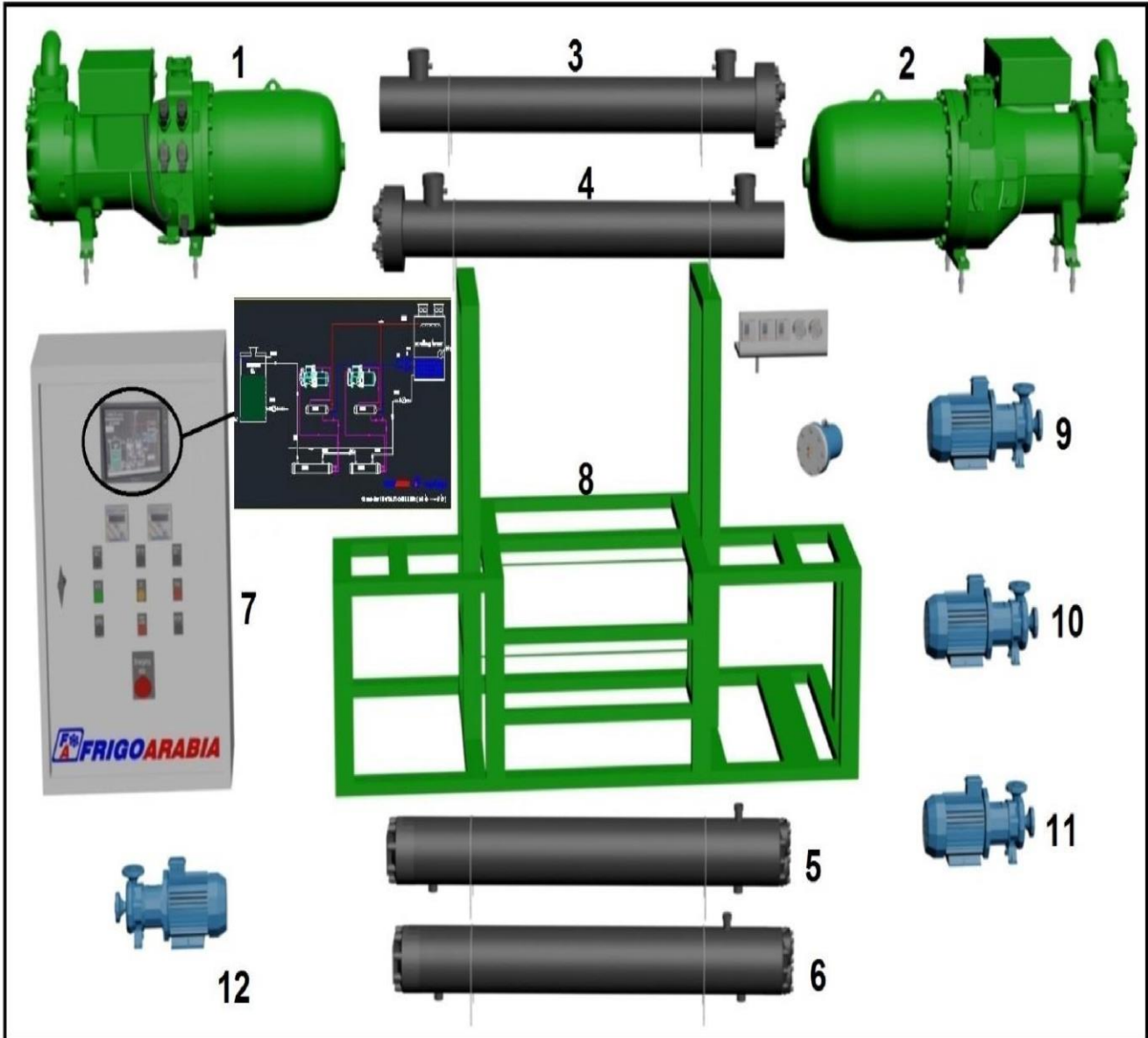
Compressor Rack		Chiller (28 To 5 °C)		Cooling Tower
Model	No. of Comp.	Evaporator Temp. (°C)	Water Volume (M ³)	Model
ICS 80 MK3	1	5	6	S-CT-140

Double Circuit Chiller:

Compressor Rack		Chiller 1 (28 To 16 °C)		Chiller (16 To 5 °C)		Cooling Tower
Model	No. of Comp.	Evaporator Temp. (°C)	Water Volume (M ³)	Evaporator Temp. (°C)	Water Volume (M ³)	Model
ICS 140 MK3	2	9	12	1	12	S-CT-170
ICS 160 MK3	2	9	13.5	1	13.5	S-CT-170
ICS 180 MK3	2	9	15	1	15	S-CT-200
ICS 220 MK3	2	9	20	1	20	S-CT-230
ICS 250 MK3	2	9	22	9	22	S-CT-250
RCS 250 MK3	2	1	22	1	22	S-CT-250

How to read our identification code for chillers model?

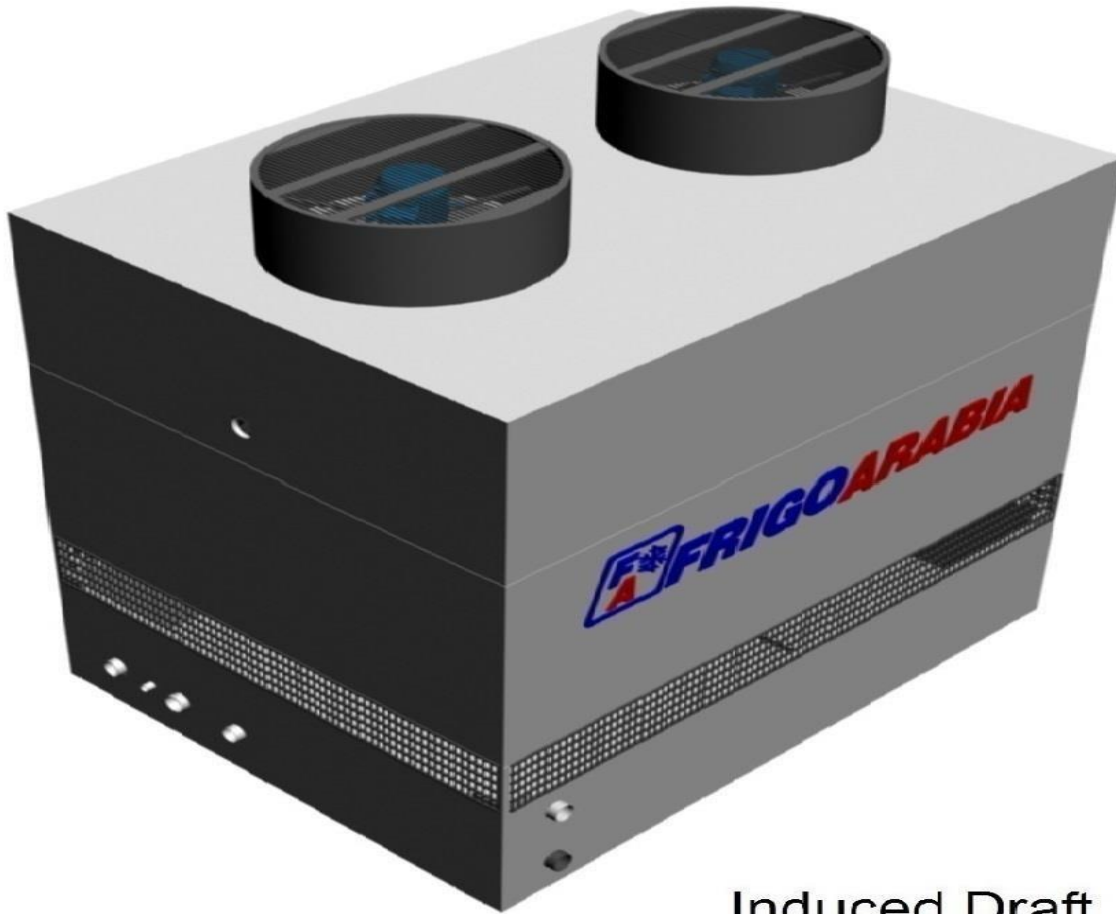




Chiller Unit Components:

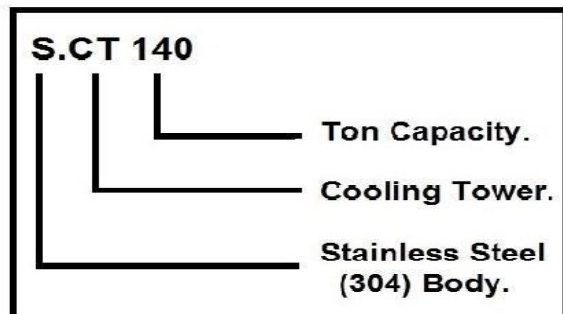
- 1-2 - Screw Compressor.
- 3-4 - Evaporator.
- 5-6 - Condenser.

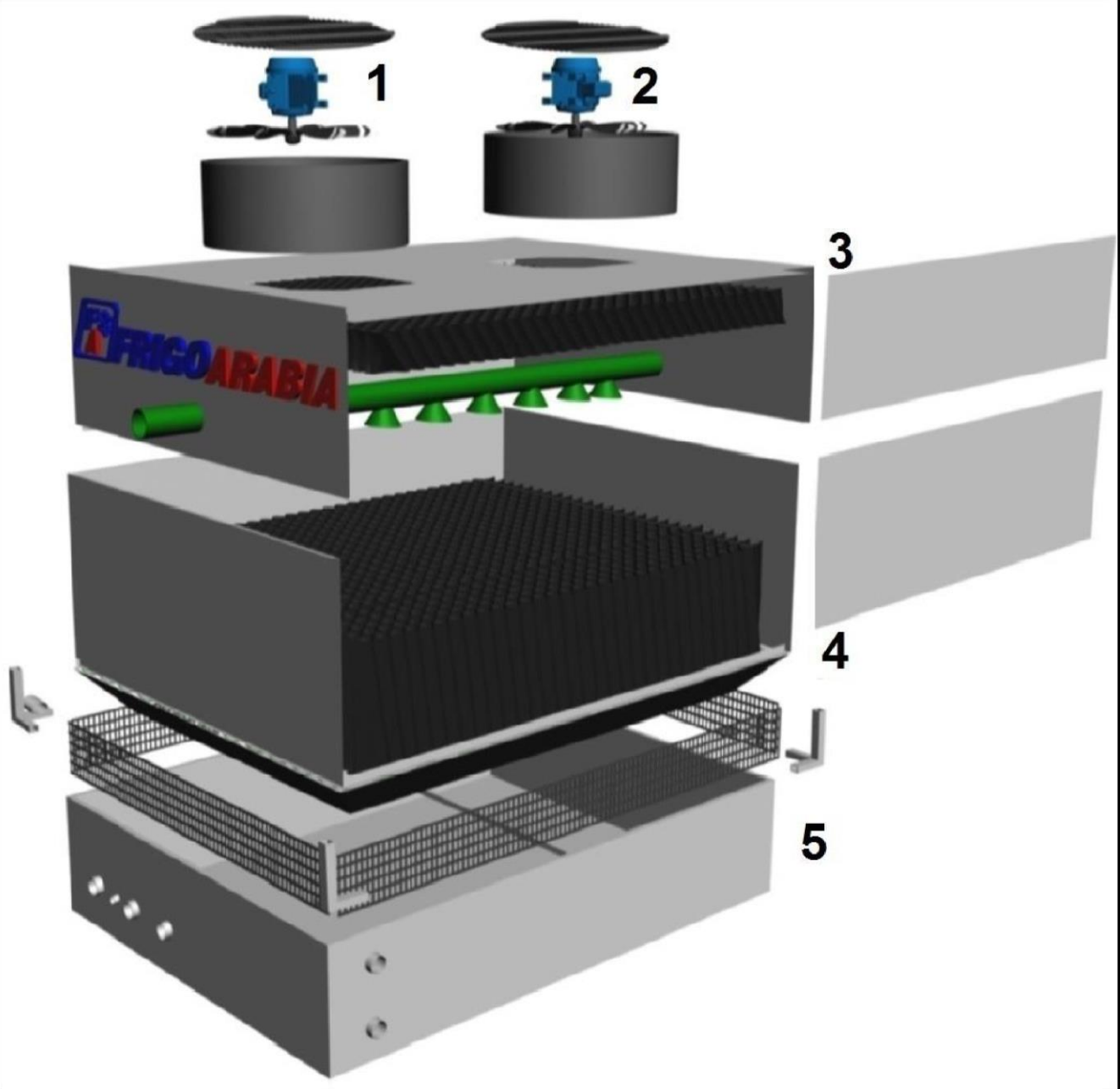
- 7 - PLC Electrical Board.
- 8 - Chassis.
- 9⇒12- Centrifugal Pump.



Induced Draft Cooling Tower.

Cooling Tower.		
Model	W.B.T	Ton Capacity
S.CT 100	27	100
S.CT 140	27	140
S.CT 170	27	170
S.CT 200	27	200
S.CT 230	27	230





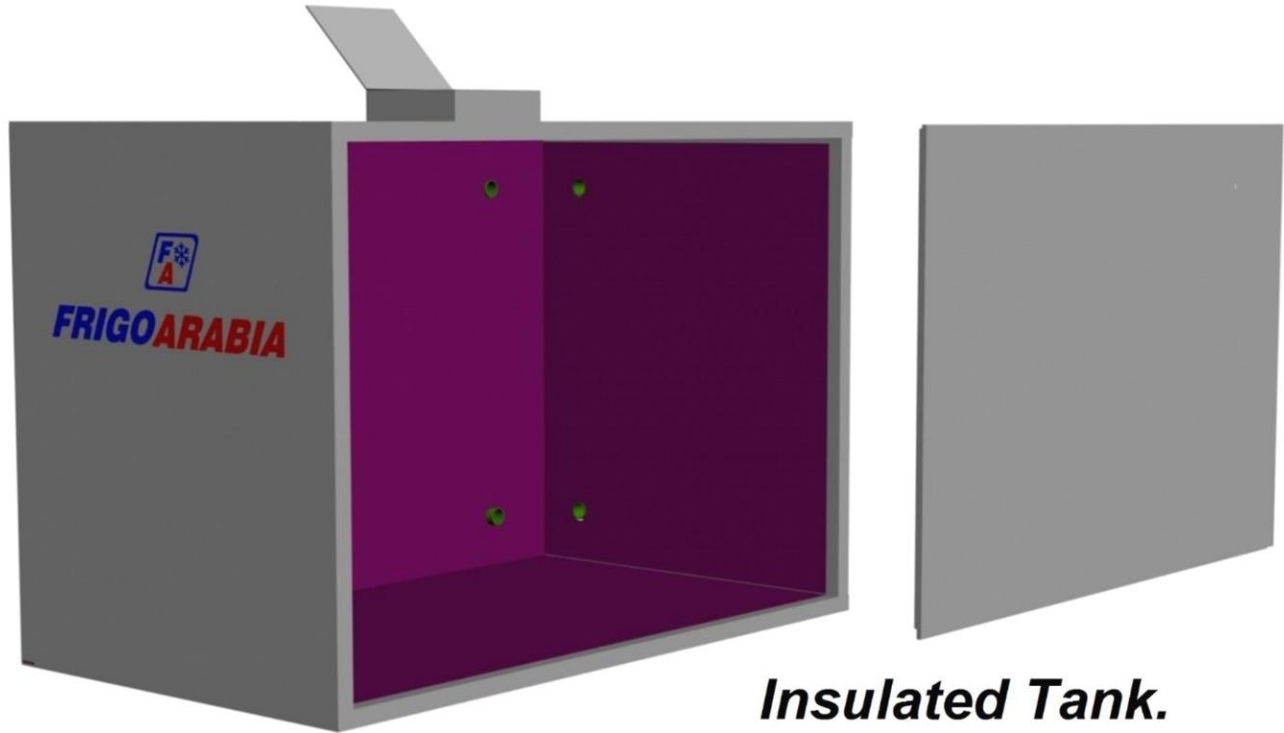
Cooling Tower Elements:

1-2- Fan.

3- Eliminator.

4- Filling.

5- Sump.



FRIGOARABIA Industrial Refrigeration









Escalators & Elevators Kits & Spare Parts.

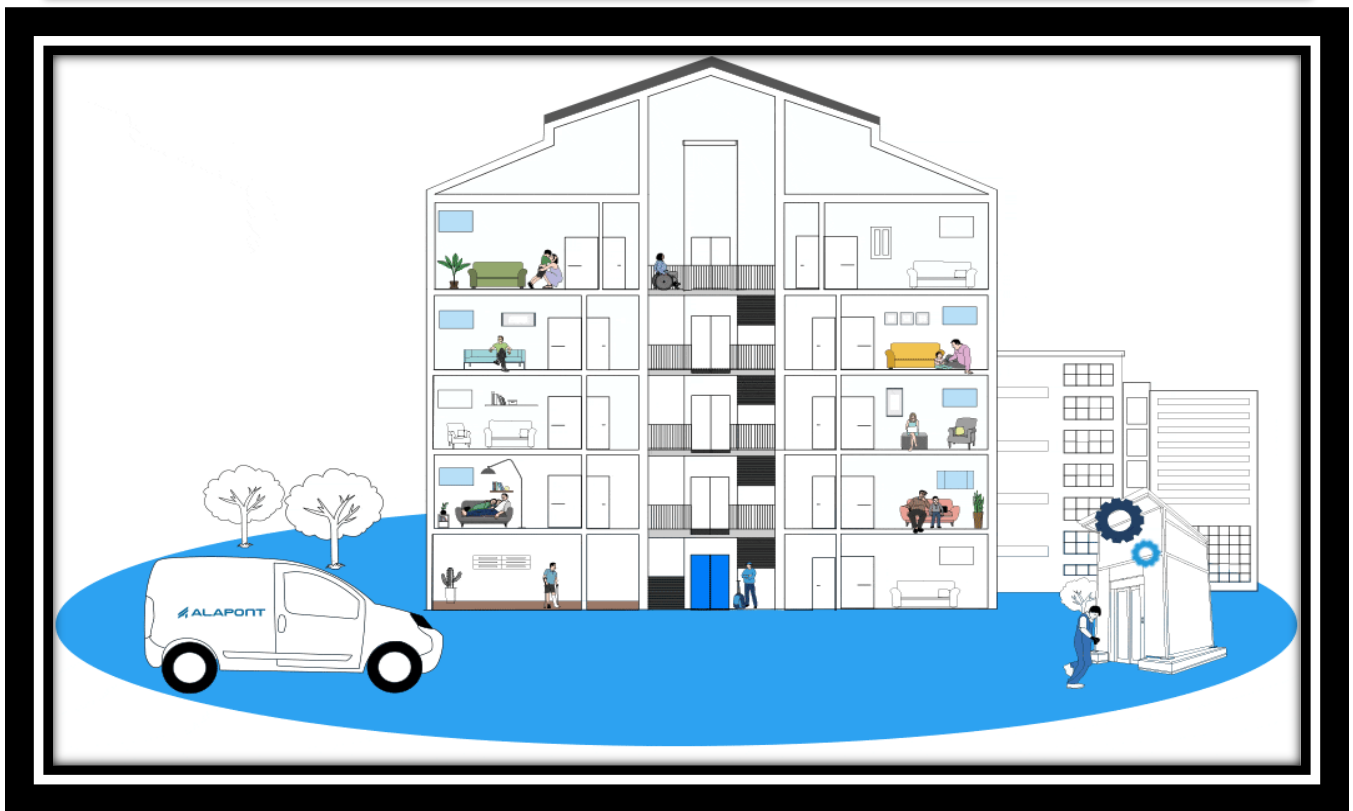
Frigo Arabia is a soul Agent for Alapont Group in Egypt.

Alapont Group is a specialist in the manufacture of elevators & also it is one of the biggest distributors in Europe for escalators & elevators spare parts of the biggest manufacture worldwide.

So Frigo Arabia starts to cooperate with Alapont France related to supply escalators & elevators sector & spare parts.



Alapont has more than 4500 maintenance contracts in Spain only & much more worldwide.



In 2005 it becomes the leader for the installation of escalators of the CNIM brand in Spain.

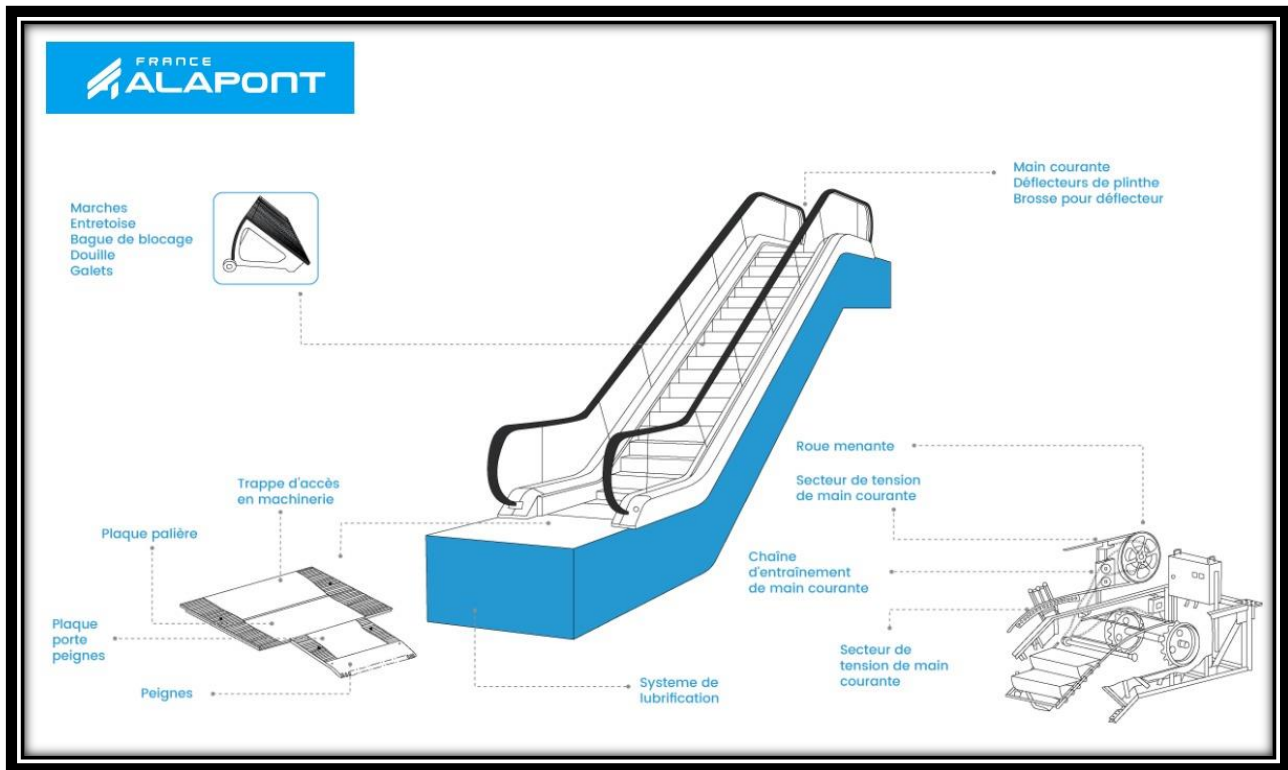
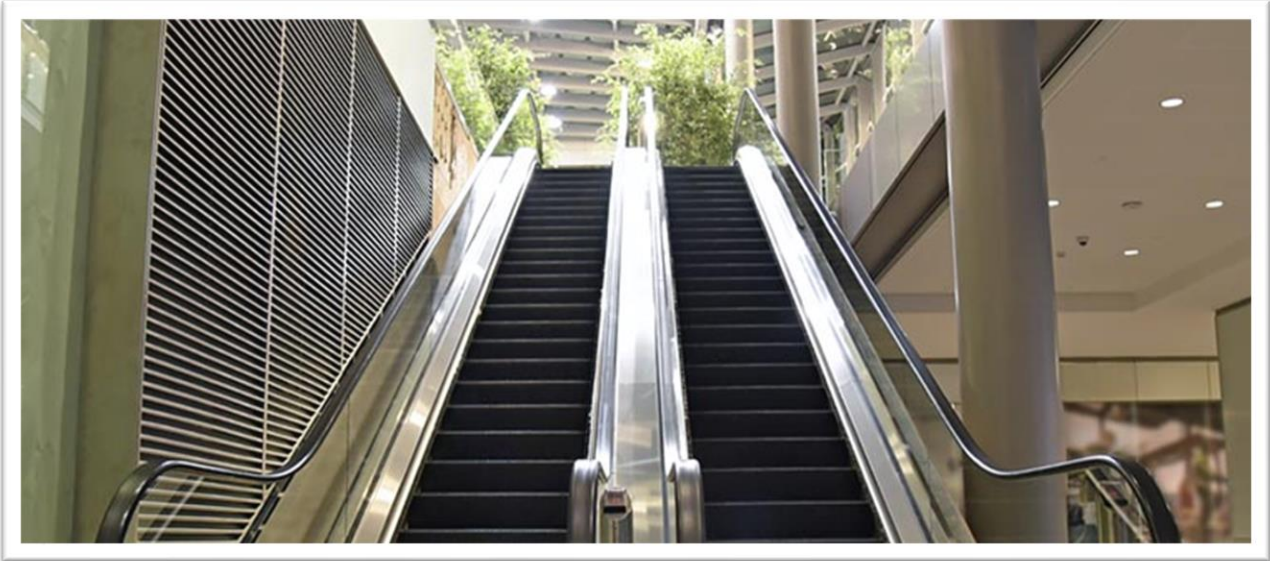


In 2010 Alapont had the opportunity to buyout the CNIM agencies in France, and took care of the maintenance of the RENNES, MARSEILLE, and TOULOUSE subways.

In 2011 Alapont Signs a partnership agreement with the company FUJITEC and wins the Marseille subway tender for the installation of Heavy-duty escalators.

The electrical box (SIEMENS components) is developed by the ALAPONT design office to meet the requirements of the specifications in terms of communication with the GMAO.

Alapont becomes the first supplier to the PARIS subway RATP for CNIM spare parts.



FA FRIGO ARABIA Escalators & Elevators


In 2013 Alapont FRANCE installs elevators in Louvres in Paris for the show of Louis Vuitton and the couturier Marc Jacob. The steps are decorated according to the requirements of the artist Daniel BUREN.



In 2014 Alapont Construction of escalators with a height difference of 12 m in Issy-les-Molyneaux.

Alapont France made a huge grows-up until it becomes becomes multi branch supplier for escalators as OTIS, KONE, SCHINDLER & TK in 2020 beside CNIM escalators.

In 2022 ALAPONT FRANCE buys the entire stock of CNIM escalators.



The specialist in the sale of spare parts for escalators and lifts

- ✓ Sale and distribution of escalators and private lifts to the professional sector.
- ✓ Sale of spare parts for CNIM and multi-brand escalators.
- ✓ Sale of spare parts for multi-brand lifts.

